



POST
GRAD

20
15

HEALTH
SCIENCES



EXECUTIVE DEAN'S

WELCOME

The Faculty of Health Sciences continues to undergo dynamic change, positioning itself as a leading teaching and research faculty. Its courses are developed and delivered within the Catholic intellectual tradition – with the goal of preparing professionals with a lifelong commitment to social justice, equity, and sustainability.

The Faculty offers postgraduate programs by coursework and by research which enhance the development of professionals in the areas of clinical exercise physiology, counselling, high performance sport, health administration, clinical education and practice (in nursing), paramedicine, mental health (with a specialisation in nursing), rehabilitation (allied health and physiotherapy), psychology and social work.

We conduct research that makes a difference. Whether it be award-winning stroke studies, or investigations on how the world population will find food in the future – ACU research aims to improve social, health and living conditions, influence public policy, and improve our knowledge in specialist fields.

Investment in research across the University has paid off, with both nursing and exercise science ranked at world standard in the most recent Excellence in Research for Australia (ERA) initiative.

Professor Michelle Campbell

Executive Dean, Faculty of Health Sciences

Our academics are leaders in their fields, and their teaching is supported by active involvement in industry and professional associations. ACU researchers have received a number of impressive research awards, including Linkage and Discovery grants from the Australian Research Council (ARC). Strong industry links means postgraduate students in the Faculty of Health Sciences can access a wide range of opportunities for practical experience.

If you are considering postgraduate study at ACU, I urge you to read on. With schools across six of the University's seven campuses and a national research institute, the Faculty of Health Sciences provides an exciting and dynamic environment in which to pursue further study. I am confident you will find your studies with us a rewarding experience.



CONNECT WITH US

Social media

Ask a question or connect with students and staff.

Facebook.com/acu

Twitter.com/ACUmedia

Youtube.com/viewACU

Contact us

If you would like to speak with one of our staff about your study options phone **1300 ASK ACU** or email futurestudents@acu.edu.au

Visit our website

For in depth course information, including fees, scholarships, support services and campus information.

www.acu.edu.au/postgraduate



FRONT COVER | Dr Tim Hartwig
Lecturer, School of Exercise Science.

Australian Catholic University attempts to ensure the information contained in this publication is correct at the time of production (June 2014); however, sections may be amended without notice by the University in response to changing circumstances or for any other reason. Check with the University at the time of application/enrolment for any updated information. Australian Catholic University.

– CRICOS registered provider: 00004G, 00112C, 00873F, 00885B



POST
GRAD

20
15

HEALTH
SCIENCES

THE ACU DIFFERENCE	4
POSTGRADUATE STUDY OPTIONS	5
SUPPORT SERVICES	8
STUDY MODES & LOCATIONS	9
FINANCIAL ASSISTANCE & SCHOLARSHIPS	10
FACULTY PROFILE	11
ACADEMIC PROFILES	14
GRADUATE ATTRIBUTES	19
STUDENT PROFILES	21
HOW DO I APPLY?	25
SCHOOL PROFILES	27
COURSE LISTINGS	31
ACU EXECUTIVE EDUCATION	54



I FLEW OVER FROM THE UK ESPECIALLY FOR THE INTENSIVE WEEK OF LECTURES AND IT WAS WELL WORTH IT.

JO CLUBB

MASTER OF HIGH PERFORMANCE SPORT
SPORTS SCIENCE OFFICER,
CHELSEA FOOTBALL CLUB UK

THE ACU

DIFFERENCE

Our graduates are skilled in their chosen fields, ethical in their behaviour, with a developed critical habit of mind, an appreciation of the sacred in life and a commitment to serving the common good.

WE'RE UNIQUE

We empower our students to think critically, ethically and to bring about change in their communities and professions.

WE VALUE YOU

As a publicly-funded university, we welcome staff and students of all beliefs and backgrounds. We are committed to providing equal access to education for all people.

WE VALUE COMMUNITY

It is critical for Australia to seek ways to connect the marginalised, poor and disadvantaged citizens in our communities. ACU acknowledges that universities, as public sites for education and research, have a pivotal role to play in this regard. ACU recognises that through community engagement, we contribute to:

- the common good;
- promoting engaged citizenship; and
- enriching our learning, teaching and research endeavours.

WE ARE AUSTRALIA'S LEADING CATHOLIC UNIVERSITY

ACU is supported by more than 2,000 years of Catholic intellectual tradition. As a member of the International Federation of Catholic Universities, we are devoted to communicating truth in every field of knowledge through teaching and research, as well as promoting the dignity of all people and the common good.

MISSION & PROFILE

Our mission underpins everything that we do at ACU. The University engages the Catholic intellectual tradition to bring a distinct perspective to higher education. We explore cultural, social, ethical and religious issues through the lens of the Catholic intellectual tradition in our teaching, research and service. By fostering and advancing knowledge in education, health, commerce, the humanities, the sciences and technologies, law, and the creative arts, ACU contributes to its local, national and international communities.

Our graduates are skilled in their chosen fields, ethical in their behaviour, with a developed critical habit of mind, and a commitment to serving the common good.

POSTGRADUATE

STUDY OPTIONS



COURSEWORK

Postgraduate coursework programs at ACU provide students with a structured learning format with set units of study and specific assessment tasks. These programs equip students with the flexibility to articulate through different course levels to masters or to exit early with an industry-relevant qualification.



GRADUATE CERTIFICATE

For students who are looking to develop their skills and knowledge in a specialist area with a focus on professional development. A pathway to further postgraduate study.

Units of study: Four



GRADUATE DIPLOMA

For students who are looking to develop their skills and knowledge in a professional vocational area. More in depth study.

Units of study: Eight



MASTERS BY COURSEWORK

Offers students an intensive and in depth study that will enhance their professional and vocational skills in a specialised area.

Units of study: 12



SINGLE UNIT ENROLMENT

For those students who wish to commence study and gain a feel for a new career move or course area without committing to a full degree. Once complete may be used as credit towards further study.

Units of study: One



RESEARCH

A research degree provides thorough training in a particular discipline area through a process of original investigation in order to increase knowledge and make an important contribution to the development of new knowledge in society. Study is undertaken by work with one or more academics with specialist expertise in that area of study. ACU offers supervised research at either masters or doctoral level.

PhD: Three to four years

MPhil: Two years

Masters by Research: 18 months



THIS IS SOMETHING I HAD ALWAYS WANTED TO DO – COMBINE THE PRACTICE WITH RESEARCH, WHICH PROVIDES THE PERFECT PREPARATION TO WORK WITHIN THE INDUSTRY.

BLAKE MCLEAN

PHD CANDIDATE
SCHOOL OF EXERCISE SCIENCE

The image shows a multi-level modern building interior. In the center, a semi-transparent grey box with an orange border contains white text. The background features glass railings, wooden stairs, and a central area with people. The ceiling has recessed lights, and there are decorative pendant lights. The walls are decorated with colorful geometric patterns. The overall atmosphere is bright and modern.

WORLD-CLASS
FACILITIES, CUTTING
EDGE TECHNOLOGY,
AND ACCESS TO
A DIVERSE RANGE
OF HEALTHCARE
PARTNERS AROUND
AUSTRALIA.

SUPPORT

SERVICES



Each of our seven campuses is equipped with the latest technology and dedicated computer labs accessible to students.



Our library resources are extensive with both print and online collections available; you can order library resources from any one of our campuses across Australia.



A confidential counselling service is available to support students in university life and beyond, available to any student with personal, study or work-related issues.



Campus Ministry offers pastoral support and spiritual mentoring to students and staff.



Careers counselling offers students the opportunity to explore their career options, develop job applications and sharpen interview skills.



Academic skills advice provides resources and assistance to students in writing, time management, exam preparation and oral presentations.



Disability services support students to overcome barriers that could hinder their university education. ACU is committed to ensuring that every student's experience is free from discrimination and harassment.



ACU's Centre for Indigenous Education and Research (CIER) provides personal, social, cultural and academic support for students. See: www.acu.edu.au/cier

STUDY MODES

& LOCATIONS

Study mode is the way in which a course or unit is delivered. ACU offers a number of flexible delivery options to suit your family and work commitments.

FULL-TIME

To be regarded as full-time, a student must be undertaking a load of at least 0.75 EFTSL. For example, in a course with the standard annual credit point load of 80 credit points, to be enrolled full-time a student must undertake at least 30 credit points per semester.

PART-TIME

A part-time student is one who undertakes a load of less than 0.75 EFTSL. For example, in a course with the standard annual credit point load of 80 credit points, a part-time student would undertake less than 30 credit points per semester.

ONSHORE

Delivered at an ACU campus.

OFF-CAMPUS

Delivered at another location.

OFFSHORE

Delivered at an overseas location.

ONLINE

Delivered online from an ACU campus.

ATTENDANCE

Primarily attendance, either face-to-face or via video conference, at an ACU campus or another location.

MULTI-MODE

Some online with a compulsory attendance component (including examinations etc).

INTENSIVE

Units are delivered in a block over consecutive weekdays and/or weekends.

ONLINE

Fully online (including assessments).

FINANCIAL ASSISTANCE

& SCHOLARSHIPS



FULL FEE PAYING

Students can nominate to pay their fees upfront without any government subsidy. Contact ACU Student Centre for more information.

FEE-HELP is a government loan scheme that assists eligible domestic fee paying students to defer payment of all or part of their tuition fees. Repayment of the loan occurs through the tax system once your income exceeds the minimum threshold.

www.studyassist.gov.au



COMMONWEALTH SUPPORTED PLACE (CSP)

Commonwealth supported places are subsidised by the Australian Government, with the student paying the remainder of the fees through a 'student contribution' amount. Not all postgraduate courses offer CSP places, and eligibility requirements apply.



FACULTY ALUMNI REBATE

A 10 per cent rebate on postgraduate fees is offered to alumni of ACU enrolling in programs offered by the Faculty of Health Sciences (conditions apply).

www.acu.edu.au/alumnirebate



RESEARCH TRAINING SCHEME/ACU FEE-WAIVER

Commencing domestic students enrolling in a Doctorate or Masters by Research at ACU will be granted a Research Training Scheme entitlement under the Commonwealth Government's Research Training Scheme (RTS). This means candidates are provided with an exemption from course fees.



POSTGRADUATE COURSEWORK SCHOLARSHIPS

A number of university scholarships are available to commencing and continuing postgraduate coursework students providing assistance with education, living and/or travel costs. For scholarship eligibility criteria and application information visit

www.acu.edu.au/scholarships



POSTGRADUATE RESEARCH SCHOLARSHIPS & FINANCIAL ASSISTANCE

For further information on private and government scholarships visit

www.acu.edu.au/research_scholarships

FACULTY

PROFILE

FAST FACTS



More than 9,500 students across 35 undergraduate courses, 28 postgraduate coursework programs and five research degrees



More than 100 Aboriginal and Torres Strait Islander students



Approximately 800 international students



Represented on six of ACU's seven campuses

FACULTY STRUCTURE

School of Allied Health

School of Exercise
Science

School of Nursing,
Midwifery and
Paramedicine

School of Physiotherapy

School of Psychology

School of Science

Find out more about our schools on page 27

FACULTY

PARTNERSHIPS

The Faculty has fostered partnerships with a number of healthcare providers enabling it to open clinical schools with Calvary Health Care in Canberra (ACT), St Vincent's Hospital in Toowoomba (Qld), and Mercy Health in Werribee (Vic). The University continues to invest in expanding health sciences facilities on its campuses with the opening of ACU health clinics in Brisbane in 2013 and with further clinics due to open throughout 2014 in Melbourne, North Sydney and Strathfield. The ACU health clinics offer a range of medical and allied health services to ACU students, staff and the general public.

ACU has fostered a number of collaborative research partnerships with professorial appointments to joint chair positions, ensuring research success for the Faculty:



Other partnerships within the Faculty include:



FACULTY

OF HEALTH SCIENCES

ACCREDITATION

All relevant programs in the Faculty of Health Sciences are accredited with the major accreditation bodies. For those programs whose first cohort of students is yet to graduate, the University is in the process of seeking accreditation.

FACULTY OF HEALTH SCIENCES RESEARCH INSTITUTE

The new Institute for Health incorporates the areas of research strength across faculties and schools to enable high quality and high impact research in partnership with international and national experts. The Institute is responsive to Australian Government Strategic Research Priorities, including the goal of promoting population health and wellbeing. The areas of concentration are:

Cardiovascular
Disease and
Metabolism

Health Services
Research

Movement and
Rehabilitation

Psychology and
Mental Health

ACADEMIC

PROFILES



**PROFESSOR
GERALDINE NAUGHTON**
SCHOOL OF EXERCISE SCIENCE

Professor Geraldine Naughton is a Professor in Paediatric Exercise Science in the School of Exercise Science, at ACU's Melbourne Campus. Her research focuses on health improvements in young people through physical activity. She has researched with a range of young populations from overweight and obese children to intensively training adolescents. She is currently focusing on equality in junior sport issues and multidisciplinary research into early interventions for child health among families from highly disadvantaged backgrounds.



**PROFESSOR
SANDY MIDDLETON**
SCHOOL OF NURSING, MIDWIFERY
AND PARAMEDICINE

Professor Sandy Middleton joined ACU in 2005 and in 2008 was appointed Professor of Nursing Research and Director of the Nursing Research Institute – a joint initiative between ACU and St Vincent's & Mater Health, Sydney.

Professor Middleton has a particular interest in stroke research and evaluation of nurse-led interventions to improve patient outcomes. Her interests also include how to change clinician behaviour to improve evidence-based practice.

In 2011, together with a team of researchers, Professor Middleton published the findings from the landmark Quality in Acute Stroke Care trial (QASC) in *The Lancet*. The study generated significant media coverage, won the 2011 Award for Impact at the Canadian Stroke Congress, and was a finalist in the NSW Premier's Public Sector Awards in the category of Excellence in Delivery.

Following on from these accomplishments, Professor Middleton and her colleagues were awarded a \$2.2 million grant for 2012-2016 from the National Health and Medical Research Council to conduct the T3 Trial: Triage, Treatment and Transfer of Patients with Stroke in Emergency Departments. This cluster randomised trial involves working with clinicians in emergency departments in three states to improve stroke outcomes.



**PROFESSOR
DAVID THOMPSON**
CARDIOVASCULAR
RESEARCH CENTRE

Professor David Thompson is Professor of Nursing in the Cardiovascular Research Centre at ACU, where he co-heads the psychosocial research program. Prior to this he worked at universities in the United Kingdom, Hong Kong and Australia.

Professor Thompson has extensive clinical and research experience in cardiac care and rehabilitation, and has published more than 600 papers, 40 book chapters and 15 books. He has secured significant research grants from the British Heart Foundation, Department of Health, Medical Research Council, National Health & Medical Research Council, Hong Kong Jockey Club and industry.

His major interests are in developing disease-specific patient-reported outcome measures and designing and evaluating novel psychosocial interventions. Professor Thompson serves on a number of expert committees and boards, including the British Heart Foundation, the British Cardiovascular Society and the European Society of Cardiology.

He has received numerous honours, including being elected a Fellow of the Royal College of Nursing, a Fellow of the European Society of Cardiology, a Fellow of the American Academy of Nursing, and a Fellow of the Cardiac Society of Australia and New Zealand.

ACADEMIC

PROFILES



PROFESSOR LINDA WORRALL-CARTER

DIRECTOR CVRC /
DIRECTOR SVCNR

Professor Linda Worrall-Carter is the Director of St Vincent's Centre for Nursing Research (SVCNR) and the Cardiovascular Research Centre (CvRC) holding a joint position between St Vincent's Hospital Melbourne and ACU. Professionally, she is a nurse and clinical health researcher with more than 20 years experience in cardiovascular health and research. Her major areas of expertise include risk assessment and prevention of Cardiovascular Disease (CVD), women and CVD, and exploring models of care around CVD. She has developed and led strong programs of research around CVD by creating teams of honours, PhD and post-doctoral nurse researchers. Professor Worrall-Carter has examined more than 25 theses nationally and internationally.

Professor Worrall-Carter has an extensive publication record and has successful grants of over \$8 million and reviews for national grants such as the National Health & Medical Research Council, Australian Research Council and the Heart Foundation. She is a member of two editorial boards and a reviewer for five national and international cardiac journals (medical and nursing). She is also a foundation member of the Australasian Cardiovascular Nurses College (ACNC) and a foundation member of the Cardiovascular Nurses Council (CNC), the affiliate group of the Cardiac Society of Australia and New Zealand (CSANZ).



PROFESSOR CHRISTINE IMMS

SCHOOL OF ALLIED HEALTH

Professor Christine Imms is a Professor of Occupational Therapy in the School of Allied and Public Health. Her research and publications are underpinned by a strong clinical foundation in paediatric occupational therapy and advanced knowledge in childhood disability and evidence-based practice. Professor Imms' research predominantly involves children, in particular children with cerebral palsy. She is an expert in a broad range of research methods and purposes including systematic reviews, randomised trials of therapeutic interventions, single-case designs, descriptive studies, qualitative research and studies related to development of measures and research into their reliability and validity.

Professor Imms' research profile demonstrates contributions across a broad field of enquiry, encompassing varying diagnostic groups (cerebral palsy, congenital heart disease, congenital hand disorders, acquired brain injury), interventions (botulinum toxin, upper limb training, splinting), measures (participation, manual ability, dexterity,) and addresses a range of topics (participation, upper limb skills, pain, evidence based practice). Professor Imms has more than 50 publications to her name, including peer-reviewed journals, book chapters and an edited book. In addition, she has established important collaborations with national and international research leaders in the field of childhood disability.



ASSOCIATE PROFESSOR SHAWN SOMERSET

SCHOOL OF ALLIED HEALTH

Associate Professor Shawn Somerset is a public health nutritionist with a diverse professional practice background. He has worked in clinical dietetics practice (diabetes and coronary heart disease prevention and treatment), in the food industry, and has held senior State Government scientific advisory positions in the health and agriculture portfolios.

He joined ACU in late 2011 to oversee the launch of the Bachelor of Applied Public Health, which saw its first intake of students on the Brisbane, Melbourne and North Sydney campuses in 2013.

Dr Somerset's general field of research interest relates to what motivates food choice, and how the expanding world population will find food into the future. Part of his research has traced the popularity of community gardens in Australian cities, and shown that participation in community gardening enhanced nutrition and food security in the long-term unemployed, and that school gardens can enhance food knowledge and diet in school-aged children. Most recently, he has conducted a pilot study of relationships between food security, nutrition status and risk of infectious disease in very poor rural communities in various countries in south-east Asia.

Over the course of his career, Dr Somerset has secured more than \$2 million in research and development funding, and has published more than 60 research papers and book chapters. He presents regularly at national and international conferences, and is a Visiting Professor at Agrocampus Ouest, University of Rennes, France, and an Associate Professor of Public Health Research at Griffith University.



**PROFESSOR
NANCY LOW CHOY**
SCHOOL OF PHYSIOTHERAPY

Professor Nancy Low Choy is a graduate of the University of Queensland, and holds a Bachelor of Physiotherapy, Master of Physiotherapy (Research) and a PhD. Professor Low Choy commenced at ACU in 2012 as Professor of Aged and Neurological Physiotherapy, a conjoint position with The Prince Charles Hospital & District/Metro North (Brisbane).

In this role, Professor Low Choy leads research with academic and clinical colleagues within the clinical environs of both hospital and community-based settings.

Professor Low Choy's considerable clinical and research experience focuses on the prevalence of falls when people present with vestibular deficits, ortho-geriatric problems and/or neurological disorders.

Professor Low Choy's competitive funding to date is in excess of \$1 million. She has more than 40 publications in peer-reviewed journals and three book chapters. Professor Low Choy is currently supervising eight research higher degree students and has supervised three doctoral programs to completion prior to joining ACU.

Professor Low Choy holds professional membership with the Australian Physiotherapy Association (APA) and the Australian Association of Gerontology (AAG) and is currently the Chair of the Qld Chapter of the AAG.



PROFESSOR JULIE HIDES
SCHOOL OF PHYSIOTHERAPY

Professor Julie Hides attended the University of Queensland and holds a Bachelor of Physiotherapy, Master of Physiotherapy Studies, and a PhD. She was a recipient of the prestigious Sir Robert Menzies Scholarship in Allied Health Sciences in 1994/1995. Professor Hides is the Clinical Director of the Mater/ACU Back Stability Research Clinic. She is a titled musculoskeletal physiotherapist and Head of ACU's School of Physiotherapy.

Professor Hides' research focuses on rehabilitation and therapeutic exercise for patients with low back pain, and she has developed a new method of treating people with this condition using ultrasound – which has gained widespread acceptance.

Professor Hides was a collaborative scientist on the Berlin Bedrest Study2 (BBR2). She has also worked with researchers from the European Space Agency (ESA), the USA military, and elite Australian sporting teams (including grants from Cricket Australia and the AFL Board of Australia). Professor Hides is a visiting professor at the Menzies Research Institute Tasmania and an Honorary Associate Professor in the School of Health and Rehabilitation at the University of Queensland.



DR STUART CORMACK
SCHOOL OF EXERCISE SCIENCE

Dr Stuart Cormack is a senior lecturer in the School of Exercise Science and is heavily involved in the new Master of High Performance Sport, which commenced in 2014. Prior to commencing this role he spent 14 years working for the Australian Football League, including eight years as fitness coach at the West Coast Eagles, two grand final appearances and a win at the 2006 AFL Premiership. Prior to this, Dr Cormack spent four years as a strength and conditioning coach at the Australian Institute of Sport. Here he worked with a number of elite athletes in a variety of team and individual sports in preparation for the Sydney 2000 Olympic Games. He is actively involved in applied sports science research including supervision of a number of postgraduate students at ACU. He has published numerous papers in scientific journals, co-authored several book chapters and regularly presents at sports science and coaching conferences, in addition to providing consultancy support to organisations including the International Cricket Council and Paris Saint-Germain Football Club.

ACADEMIC

PROFILES



DR BRIAN MCKENNA

SCHOOL OF NURSING, MIDWIFERY
AND PARAMEDICINE

Dr Brian McKenna is a Registered Nurse and the inaugural Professor of Mental Health Nursing at ACU and NorthWestern Mental Health–Melbourne Health.

Dr McKenna's undergraduate degree was in social anthropology and an interest in culture led to his role as a nursing orderly in Derby, Western Australia in the late 1970s. Working with people who experienced the double stigma of mental illness and related violent offending was a challenge he relished.

Dr McKenna has published widely on research in forensic mental health, and the interface between clinical practice and mental health law. His present position within NorthWestern Mental Health involves working with mental health nurses to build a culture of nursing involvement in research. This work focuses on embedding recovery-orientated care into nursing practice and mental health service delivery; reducing restrictive interventions in nursing care; and meeting the physical health care needs of mental health consumers.



DR MEGAN WILLIS

SCHOOL OF PSYCHOLOGY

Dr Megan Willis is a promising early career researcher who joined the School of Psychology in 2012. She is an active member of the Cognition and Emotion Research Lab, a cross-campus research group that focuses on research exploring cognition and emotion in both healthy and clinical populations.

Dr Willis supervises honours, masters and PhD research students whose projects are focused on understanding the cognitive, neural and physiological mechanisms underlying social cognition and emotion perception.

She is particularly interested in understanding the processes that underlie the kind of social judgements we make on a daily basis, such as how approachable and trustworthy others are.

Dr Willis' research utilises a diverse range of methodologies, including facial electromyography, skin conductance responses and transcranial direct current stimulation. She has been published in high impact international journals, including *NeuroImage*, *Neuropsychologia* and *Emotion*.



**PROFESSOR
PETER H. WILSON**

SCHOOL OF PSYCHOLOGY

Professor Peter Wilson has a distinguished research background, coordinating research programs in the field of motor and cognitive development in children and researching the intersection between emotion, cognition and motor development. He has led research programs on the use of virtual-reality technology in motor and cognitive rehabilitation in both adults and children.

Professor Wilson's work is truly cross-discipline – as lead Chief Investigator on Australian Research Council (ARC) Linkage projects, he works closely with scientists, new media artists and clinicians and has collaborated extensively with colleagues internationally. He is committed to learning and teaching and has developed and implemented several innovative curriculum projects.

Professor Wilson has published extensively in journals and books both in Australia and overseas and he regularly presents his research at domestic and international conferences.



**ASSOCIATE PROFESSOR
JOANNA ZUBRZYCKI**
SCHOOL OF ALLIED HEALTH

Associate Professor Joanna Zubrzycki is one of the leading Australian academics in the field of Aboriginal and Torres Strait Islander social work education and practice. Associate Professor Zubrzycki was the project leader for a large and ground breaking teaching and learning grant which produced the first Australian evidence-informed Teaching and Learning Framework in Aboriginal and Torres Strait Islander social work education.

Associate Professor Zubrzycki's research and publications have attracted international and national recognition. Her scholarly work showcases the importance of working collaboratively with Aboriginal and Torres Strait Islander colleagues and community.

Since 2011 her joint Australian publication written with two Aboriginal colleagues, *What do we know? The experiences of social workers working alongside Aboriginal people*, has remained the most read publication in the leading *Australian Social Work* journal and won the prestigious Australian social work award for research publication.

Associate Professor Zubrzycki is also active in the field of social work practice with refugees and asylum seekers.



**ASSOCIATE PROFESSOR
LEAH BRENNAN**
SCHOOL OF PSYCHOLOGY

Associate Professor Leah Brennan specialises in the application of psychological approaches to understanding and treating eating and weight disorders and their psychosocial comorbidities. She is particularly interested in the development, evaluation and dissemination of evidence-based interventions for the treatment of these concerns.

Associate Professor Brennan has published widely in the area and is regularly invited to speak at scientific conferences and provide comment to the media. She is actively involved in a number of professional bodies whose aim is to improve the understanding and treatment of eating and weight disorders. She is a member of the council of the Australian and New Zealand Obesity Society, stream leader of the Australasian Child and Adolescent Obesity Research Network (ACAORN) Parenting, Child Behaviour and Wellbeing Stream, and convenor of the Australian Psychological Society's Psychology of Eating, Weight and Body Image Special Interest Group.



DR TOM WHELAN
SCHOOL OF PSYCHOLOGY

Dr Tom Whelan is the national course director for counselling, overseeing both the undergraduate and graduate programs. He has taught for over 20 years at university and currently teaches developmental psychology, abnormal psychology and counselling.

Dr Whelan has published widely in academic journals, text books and the popular press. In addition, he has broad counselling experience having worked in a university counselling service and a variety of hospital settings. His current field of research involves the relationship between emotions and wellbeing. He has specific interests in the role of crying and factors involved in post-traumatic growth. Dr Whelan is also interested in emotion regulation, particularly the relationship between crying and wellbeing in adolescence and adulthood and the multidimensional nature of perfectionism.

GRADUATE

ATTRIBUTES

A postgraduate qualification from one of our seven campuses will be distinctive in its consideration of ethical and social responsibilities. ACU graduates are critical thinkers who have the skills to bring about change in their community, profession and industry.

INTELLECTUAL

- critical and analytical abilities
- enthusiasm to search for further knowledge and understanding
- open-mindedness and receptiveness to new ideas
- expertise in chosen academic field.

VALUES

- knowledge and skills to meet relevant professional requirements
- understanding of and commitment to professional ethical standards
- information literacy, communication and interpersonal skills.

PROFESSIONAL

- commitment to values consistent with the University's Mission
- a spirit of service to the community
- commitment to good citizenship, including respect for individuals, empathy with persons of differing cultural and religious backgrounds, community responsibility and concern for the environment
- a high regard for equity and human rights in the context of a broad understanding of globalisation.



AS A STUDENT AND NOW AS A MEMBER OF STAFF I HAVE ALWAYS CONSIDERED MYSELF FORTUNATE TO BE INVOLVED IN AN ORGANISATION WITH AN ETHOS THAT SETS ITSELF APART FROM OTHERS.

DR TIM HARTWIG
SCHOOL OF EXERCISE SCIENCE

STUDENT

PROFILES



ROBERT CLAYTON

MASTER OF CLINICAL NURSING
(CARDIAC NURSING)

"I have just completed my Master of Clinical Nursing (Cardiac Nursing) at ACU. I did most of the course online with some face-to-face subjects through my hospital. This combination worked for me and provided the flexibility I needed to fit my study in around shift work.

The lecturers and tutors are passionate about what they teach, and always made themselves available for advice and support. Apart from the modules, I also learnt a lot from the online discussion forums where you share your ideas and experiences with nurses from different backgrounds.

I've gained the specialised knowledge and skills needed to take on a more senior role at work. It's also given me the opportunity to think critically about some of the broader issues in nursing and healthcare, but always with a focus on bringing it back to my own practice."



EDWARD CRENDAL

PHD CANDIDATE
SCHOOL OF EXERCISE SCIENCE

"I embarked on my PhD journey in 2010 under the tutelage of Professor Geraldine Naughton from ACU Melbourne, and Professor Philippe Obert from the University of Avignon, France. For me, the decision to begin a PhD in exercise and health science at ACU stemmed from my desire to know more about this rapidly growing and increasingly critical area. The smaller, more personalised setting of ACU meant that I would be a member of the community of academics, able to network and share in the research experience.

So far my two years as a PhD student have been filled with exciting opportunities. Professor Naughton's collaboration with Professor Obert allowed me to inject an international dimension to my research, and I was fortunate enough to spend a year in Professor Obert's lab in the south of France. Back on home soil, the collaboration between ACU and St Vincent's Hospital Melbourne has helped me build on my experience in echocardiography.

My research aims to identify subtle cardiovascular changes in populations with metabolic disturbances, while the innovation of my PhD lies in the use of cutting-edge echocardiographic technology, known as speckle tracking imaging. Thus, having the support of both paramedical sonographers at St Vincent's Hospital and a leading team of cardiovascular researchers in France has been invaluable. I hope to always have a foot in the door with research in exercise and health science at ACU, and one day potentially work as a cardiac sonographer."



BRIDIE HELLINGS

MASTER OF PSYCHOLOGY
(CLINICAL)/ DOCTOR OF
PHILOSOPHY

"After completing my undergraduate studies in psychology, I wanted to continue my education further with postgraduate study. I chose ACU due to the values of the university, which resonated with my own values. I wanted the opportunity to study on a friendly campus and in smaller classes.

During my degree I undertook a variety of fieldwork placements – in a school, a private psychiatric hospital, an eating disorders day program and at the University's psychology and counselling clinic. During these placements I was supported by a supervisor, and by the field placement officer at ACU. I was able to develop my skills in assessment, report writing, case formulation, counselling and working within a multidisciplinary team.

I currently work as a mental health clinician for Monash Health, in the adult outpatient eating disorder service. I provide clients with individual counselling, focusing on recovery from their eating disorders. This role involves work within a multidisciplinary team, liaison with GPs and lots of contact with clients. During my studies I worked as a provisional psychologist in a fieldwork placement for Monash Health, at the Butterfly Eating Disorder Day Program. This placement, and my study at ACU, helped me develop many of the skills necessary for my current role."



A COMPONENT OF MY STUDY RESULTS PROVIDED RESEARCH THAT CAN ASSIST HOSPITAL STAFF WITH ANTICIPATING THE NEEDS OF STROKE PATIENTS AND THE LEVELS OF DISABILITY LIKELY TO BE EXPERIENCED.

ASMARA JAMMALI-BLASI

BACHELOR OF NURSING (HONOURS)
EPIDEMIOLOGIST, NORTHERN TERRITORY
DEPARTMENT OF HEALTH

STUDENT

PROFILES



PETRA LAWRENCE

PHD CANDIDATE
SCHOOL OF NURSING, MIDWIFERY
AND PARAMEDICINE

"My main field of study is nursing. My research is a randomised controlled trial testing the efficacy of motivational interviewing for emergency department attendees who have mild and moderate levels of psychological distress.

I chose ACU because of the tremendous support I received during my earlier studies there. I completed a Bachelor of Nursing and an honours degree and it seemed a natural progression to enroll in a PhD. I love the fact that it is a small university and I have great relationships with the staff.

There are many opportunities to develop my portfolio, such as membership of committees where I can network with research staff from other states. I also won an Australian Postgraduate Award, which takes the pressure off financially.

My supervisors are very helpful and keen for me to finish my research in a timely fashion. We have monthly meetings to discuss my progress, and they often steer me back in the right direction when I get distracted. When I complete my PhD, I would like to continue to do something which has meaning for me."



SUSAN DARZINS

PHD CANDIDATE
SCHOOL OF ALLIED HEALTH

"My studies focus on investigating the validity and clinical utility of the Personal Care Participation Assessment and Resource Tool (PC-PART). The PC-PART is a clinical assessment used in occupational therapy to evaluate a person's unmet needs in accomplishing activities of daily living required for community life. There are no other assessments quite like it being used in clinical settings. There are very few existing validation studies of the PC-PART and so extending our understanding the PC-PART's validity and clinical usefulness in clinical practice is important.

My supervision experience with Professor Christine Imms has been extremely positive and there is good collaboration between my ACU supervisor and my external supervisor. The School of Allied Health is a thriving and happy environment and I feel very much a part of the place, even though I am a student. Staff are very helpful and encouraging and I have a lovely workspace in the new Daniel Mannix building.

I have been really impressed by the range of learning opportunities that are available at ACU and the resources that have been made available to me. One thing I've especially noticed is the extent to which online learning and video conferencing are used to bring ACU staff and students from around Australia together. I have also been struck by the friendliness of the University and the overt focus on respect and dignity towards people of different cultural backgrounds and beliefs."



PAUL TAYLOR

PHD CANDIDATE
SCHOOL OF EXERCISE SCIENCE

"My project is examining discrete movement variability, an area influenced by both biomechanical and motor control research. As the name suggests, the study is concerned with variability in human movement. In particular, I am assessing discrete movements which form part of the skill set of team sports, such as the over arm throw.

ACU's Faculty of Health Sciences has provided the ideal environment for my PhD. It has given me the opportunity to pursue my own area of interest, provided access to government funding and provided other support such as funds for skill training and overseas conference attendance when needed. Being both big (national) and small (individual campuses are smaller than many other universities) means the best of both worlds. The small campuses allow excellent access to labs and equipment, and a great supervisor-to-student ratio means help and guidance is never hard to find. I can also call on the broad knowledge base of staff on six campuses when I need it.

ACU provides a caring study environment where I am appreciated as an individual. This is evident in the flexibility I am allowed when I need to deal with the occasional chaos that arises from having a young family."



I CAN CALL ON THE
BROAD KNOWLEDGE
BASE OF STAFF ON SIX
CAMPUSES WHEN
I NEED IT.

PAUL TAYLOR

PHD CANDIDATE
SCHOOL OF EXERCISE SCIENCE

HOW

DO I APPLY?

Application to ACU postgraduate coursework programs, including graduate or postgraduate certificates and diplomas, master's degrees, professional doctorates and PhDs (Doctor of Philosophy), is by online application direct to ACU.

Look up your preferred course with our course search tool (www.acu.edu.au/courses) and view the application requirements specific to that program.



ADDITIONAL INFORMATION REQUIREMENTS

Application to some courses also requires the submission of supporting documentation and/or additional information forms.



RESEARCH APPLICATIONS

Applications to ACU postgraduate research programs are by online application to the University through the Office of Research. The University administers all applications for higher degrees by research. Prior to applying to enter a higher degree by research, you will need to develop a topic for your research, and find a supervisor. In the first instance you should contact the Research Services Officer.



RESEARCH SERVICES OFFICER

E: Res.Cand@acu.edu.au
W: www.acu.edu.au/research

SCHOOL

PROFILES

SCHOOL OF ALLIED HEALTH

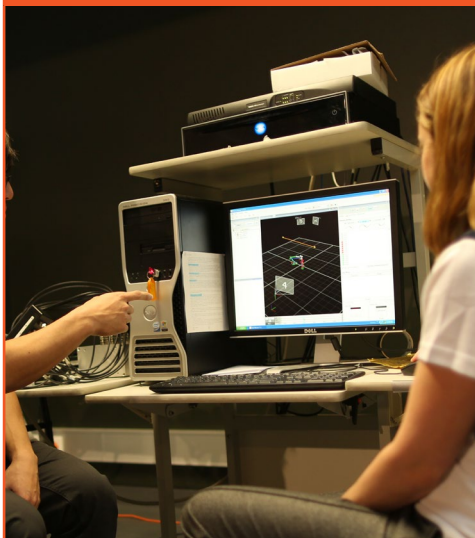


The School of Allied Health hosts the disciplines of public health, occupational therapy, speech pathology and social work. The School has opportunities for masters and doctoral students to join current projects, and expertise within the respective disciplines.

The following doctoral theses are currently being supervised in the School of Allied Health:

- The internal validity and clinical utility of the Personal Care Participation Assessment and Resource Tool (PCPART);
- Children with profound intellectual and multiple disabilities and participation in family activities;
- Associations between diet and gut microbiota in patients with cystic fibrosis;
- Multi-site Emergency Department mental health/alcohol risk study;
- Acculturation, perceived discrimination and Type 2 diabetes among sub-Saharan African migrants;
- Early post-surgical biopsychosocial predictors of successful and non-successful outcomes in bariatric surgery;
- Making meaning out of disaster: the role of emergent group in post disaster communities;
- Human rights as constructed and understood by African families from refugee backgrounds;
- Journey towards successful ageing: The Philippine experience.

SCHOOL OF EXERCISE SCIENCE



The School of Exercise Science comprises staff and students across three campuses – Brisbane, Melbourne and Sydney (Strathfield). Researchers, lecturers and clinical supervisors conduct research in areas such as sports science, elite athlete preparation and career development, recreation leadership, and the clinical applications of exercise in healthy populations, those with chronic disease, and/or injured populations.

The following doctoral theses are currently being supervised in the School of Exercise Science:

- Cardiometabolic risk factors and myocardial characteristics in young women with and without abdominal obesity;
- Fatigue responses to rugby league training and competition;
- Calcium and vitamin-D supplementation on bone structural properties in young male jockeys: a randomised controlled trial;
- Improving postural stability in people with Parkinson's disease: a randomised-controlled trial;
- Creatine uptake and its ergogenic effects in response to supplementation and training;
- The development and validation of a functional measure of leg strength for improved mobility in neurological conditions.

SCHOOL OF SCIENCE



Staff in the School of Science include both environmental and biomedical scientists. Research is conducted on campus, in the field, and in partnership with government and statutory authorities. The key research areas in environmental science are ecology, bioremediation, ecotoxicology, environmental ethics and environmental chemistry.

The following honours theses are currently being supervised in the School of Science:

- Laboratory bioremediation of selected hydrocarbons using coir pith; terrestrial and aquatic applications;
- Toxicokinetics of pollutant herbicides acting on near-shore phototrophs under turbidity-driven light regimes;
- Natural strategies for remediation of the environment after oil spills.

The following doctoral thesis is currently being supervised in the School of Science:

- Biological soil crusts as indicators of ecosystem health.

SCHOOL OF NURSING, MIDWIFERY AND PARAMEDICINE



The School of Nursing, Midwifery and Paramedicine operates across five campuses – Ballarat, Brisbane, Canberra, Melbourne and Sydney (North Sydney). Along with researchers, lecturers and clinical supervisors, there are 14 joint research appointments with public and private health services. Research in the School focuses on five major national health priority areas:

- Acute care
- Chronic and palliative care
- Innovative healthcare delivery systems
- Implementation research translating evidence into practice
- Vulnerable communities

Multiple campuses and strong industry links provide excellent opportunities to undertake significant research in both metropolitan and regional centres of Australia, as well as internationally.

The following doctoral theses are currently being supervised in the School of Nursing, Midwifery and Paramedicine:

- Collaboration between nurse practitioners and medical practitioners in primary healthcare in Australia;
- Facilitating change in a neonatal intensive care redevelopment: a participatory action research project;
- The phenomenon of pain management in women living with chronic pelvic pain using an extended version of Colaizzi's method;
- Evaluation of new Paediatric Emergency Department at a public hospital in Queensland;
- Improving care options and subsequently birth outcomes along with a reduction in the use of medical intervention for women who present to a large tertiary hospital in early labor;
- The effectiveness of nursing intervention applying the Protection Motivation Theory and Social Support on Type 2 Diabetes Mellitus Preventive Behaviours among populations at risk, Thailand;
- Barriers to effective lifestyle change of patients after myocardial infarction in Thailand;
- Diagnose and Manage Early: Women's Ischaemia and Infarction (DaME II);
- Evaluation of a behaviour change intervention to improve the management of fever, hyperglycaemia and swallowing dysfunction following acute stroke.

SCHOOL OF PSYCHOLOGY



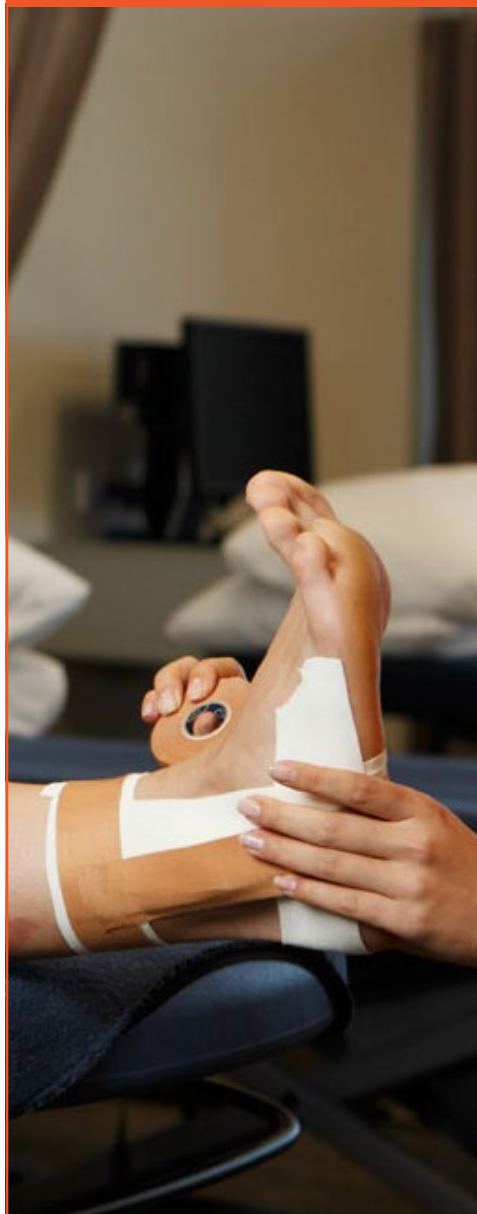
The School of Psychology is located at the Brisbane, Melbourne and Sydney (Strathfield) campuses. Research in the School is innovative, and spans three main areas of strength: (i) cognition and applied cognitive neuroscience, (ii) developmental and educational psychology, and (iii) clinical and health psychology. This research has a strong focus on influencing practices in health, education and the community. Active psychology and counselling clinics are run at both the Melbourne and Brisbane campuses, which support both professional training and research.

The School offers quality research training facilities and students are strongly encouraged to present their research at local and international forums.

The School has a number of prominent research-focused professors, research fellows, and around 40 current PhD students. It also collaborates with leading international laboratories which support research exchanges for both staff and students.

The following doctoral theses are among those currently being supervised in the School of Psychology:

- An investigation of episodic future thinking ability of novice and chronic illicit drug users;
- Exploring emotion regulation capacity in older adults: Effects on expression, physiology and memory;
- Early recognition and prevention of postpartum depression and anxiety;
- Is there more to introversion than sociability? Development and validation of a new introversion measure;
- Intervention selection and discontinuation in autism spectrum disorder.



The School of Physiotherapy operates in Brisbane and Sydney (North Sydney) and conducts research in five key areas, focusing on:

- Rehabilitation for aged and neurological disorders
- Cardiorespiratory
- Paediatric
- Chronic pain
- Musculoskeletal

Research is conducted on campus, within health service research clinics, and in partnership with clinical providers. The School's research laboratories are housed in purpose built, flexible spaces that facilitate the conduct of research projects in all fields of physiotherapy. The laboratories provide space for data collection and analysis, as well as facilities for presentations of research data.

The following research higher degree theses are currently being supervised in the School of Physiotherapy:

1. Musculoskeletal research

- The relationship between laboratory and clinical measures of lumbo-pelvic instability and upper body injury in elite AFL players and elite swimmers;
- Reviewing the demographic profile, clinical characteristics and treatment outcomes of a low-back pain cohort and developing a sustainable research clinic model;
- Investigation of spinal, pelvic and thigh musculature and spinal angles in elite Australian Rules footballers;
- The relationship between laboratory and clinical measures of lumbo-pelvic instability and upper body injury in elite AFL players and elite swimmers;
- Clinical presentation and treatment outcomes of a cohort of low back pain patients;
- The effect of stress on elite AFL players.

2. Rehabilitation for aged and neurological disorders research

- Prevalence, profile and efficacy of conservative management for patients with vestibular dysfunction;
- Perceived readiness for discharge from rehabilitation: patient, carer and physiotherapists' perspectives;
- Investigation of the long term efficacy of four wheel walker use and presentation of back pain: implications for prescription and management;
- Maximising recovery after surgery for a fractured neck of femur: a prospective cohort study;
- Validity, specificity and sensitivity of the short-form dizziness questionnaire to facilitate referral of older fallers and people with dizziness.

COURSE

LISTINGS
2015

CLINICAL EDUCATION

COURSE	DURATION	CAMPUS/ MODE	TOTAL FEES/ INTAKE	CSP	FURTHER INFORMATION & REQUIREMENTS
GRADUATE CERTIFICATE IN CLINICAL EDUCATION This course offers students a foundation for facilitating clinical learning in the healthcare workplace. The program will provide students with the knowledge and skills to plan, implement and evaluate programs and to overcome challenges in facilitating learning in dynamic healthcare workplace settings.	1 year PT 4 units	Nationally online	\$7,700 (\$1,950 per unit x 4)	N	Applicants must have completed a bachelor degree in a health discipline or equivalent.
		Online	Sem 1 (Feb) and Sem 2 (Jul)		
GRADUATE DIPLOMA IN CLINICAL EDUCATION This graduate diploma allows students to develop skills in designing, implementing and evaluating clinical education programs within the healthcare workplace. Students will examine the ethical aspects of contemporary healthcare delivery in respect to clinical education in the healthcare setting.	1 year FT or equivalent PT 8 units	Nationally online	\$15,600 (\$1,950 per unit x 8)	N	Applicants must have completed a bachelor degree in a health discipline or equivalent.
		Online	Sem 1 (Feb) and Sem 2 (Jul)		
MASTER OF CLINICAL EDUCATION Graduates will be able to: <ul style="list-style-type: none"> ➤ evaluate issues and challenges confronting the healthcare sector; ➤ conceptualise new and creative approaches to clinical education to support service delivery in culturally-diverse healthcare settings; ➤ connect theory, practice and research with regard to clinical education in the healthcare workplace; ➤ examine the ethical aspects of personal, social, cultural, environmental and institutional issues that occur within contemporary healthcare delivery. 	1.5 year FT or equivalent PT 12 units	Nationally online	\$23,400 (\$1,950 per unit x 12)	N	Applicants must have completed a bachelor degree in a health discipline or equivalent.
		Online	Sem 1 (Feb) and Sem 2 (Jul)		

CLINICAL EXERCISE PHYSIOLOGY

COURSE	DURATION	CAMPUS/ MODE	TOTAL FEES/ INTAKE	CSP	FURTHER INFORMATION & REQUIREMENTS
MASTER OF CLINICAL EXERCISE PHYSIOLOGY This degree looks at how exercise is used as a preventative, prescriptive and rehabilitative process for complex and chronic disease, work-related injuries and to promote good health.	1.5 year FT or equivalent PT 8 units	Melbourne Strathfield	CSP and/or \$15,600 (\$1,950 per unit x 8) (fee-paying)	Y	Applicants must: <ol style="list-style-type: none"> have completed an undergraduate degree that is accredited by Exercise and Sports Science Australia (ESSA) at Exercise Science level, with a grade point average of at least 4.8; or submit evidence of a current CPR certificate; demonstrate suitability to undertake the course:
		Attendance	Sem 1 (Feb)		

COUNSELLING

COURSE	DURATION	CAMPUS/ MODE	TOTAL FEES/ INTAKE	CSP	FURTHER INFORMATION & REQUIREMENTS
GRADUATE CERTIFICATE IN COUNSELLING Students will gain a basic understanding of counselling by developing the knowledge, professional skills and ethical values important to the discipline. The program's theoretical and practical components will enhance your current work practices, equipping you for competent support work in a variety of settings.	6 months FT or equivalent PT 4 units	Brisbane Strathfield Melbourne	\$8,200 (\$2,050 per unit x 4)	N	Applicants must have completed: <ul style="list-style-type: none"> ➤ a bachelor degree in any discipline OR at least three years experience in a counselling role; and ➤ a satisfactory interview demonstrating suitability to undertake the course.
		Attendance	Sem 1 (Feb)		
GRADUATE DIPLOMA IN CLINICAL COUNSELLING Students will build on previous academic study or personal and professional experience by gaining exposure to extensive theories and counselling practice. Students undertake one practicum placement comprised of a minimum of 40 hours of person-to-person counselling and participate in group supervision with an appointed supervisor, gaining substantial experience in the field.	2 years PT 8 units	Brisbane Strathfield Melbourne	\$16,400 (\$2,050 per unit x 8)	N	Applicants must have completed: <ul style="list-style-type: none"> ➤ a bachelor degree in any discipline; or ➤ a Graduate Certificate in Counselling; or ➤ an advanced diploma in an area relevant to welfare or community services and a minimum of two years relevant work experience and at least two professional references; and ➤ a satisfactory interview demonstrating suitability to undertake the course.
		Attendance	Sem 1 (Feb)		
GRADUATE DIPLOMA IN COUNSELLING (CHILD AND ADOLESCENT) Students will extend their knowledge and skills in the counselling discipline specifically for infants, children and adolescents. Exploration of current theories and practice will build on the student's previous academic study, or personal and professional experiences. Students undertake one practicum placement (40 hours of person-to-person counselling) in a child and adolescent setting and participate in group supervision with an appointed supervisor, gaining substantial experience in the field.	2 years PT 12 units	Strathfield	\$24,600 (\$2,050 per unit x 12)	N	Applicants must have completed: <ul style="list-style-type: none"> ➤ a bachelor degree in any discipline; or ➤ Graduate Certificate in Counselling ; or ➤ an advanced diploma in an area relevant to welfare or community services and a minimum of two years relevant work experience and at least two professional references; and ➤ a satisfactory interview demonstrating suitability to undertake the course.
		Attendance	Sem 1 (Feb)		
MASTER OF CLINICAL COUNSELLING Students will gain knowledge of counselling theories, human behaviour and mental health issues. The course is designed to prepare professional counsellors to work in a range of settings such as community mental health, community agencies, schools, multidisciplinary health teams, and in private practice. Students complete two practicum placements, comprised of a minimum of 100 hours of person-to-person counselling and participate in group supervision with an appointed supervisor, gaining substantial experience in the practice of counselling.	2 years FT or equivalent PT 8 units	Brisbane Strathfield Melbourne	\$16,400 (\$2050 per unit x 8)	N	Applicants must have completed: <ul style="list-style-type: none"> ➤ a bachelor degree ; or ➤ Graduate Diploma in Counselling (or equivalent); and ➤ a satisfactory interview demonstrating suitability to undertake the course.
		Attendance	Sem 1 (Feb)		

EXERCISE SCIENCE

COURSE	DURATION	CAMPUS/ MODE	TOTAL FEES/ INTAKE	CSP	FURTHER INFORMATION & REQUIREMENTS
BACHELOR OF EXERCISE AND HEALTH SCIENCE (HONOURS) BACHELOR OF EXERCISE AND SPORTS SCIENCE (HONOURS) These one-year degrees are for high-achieving students who have already completed a relevant bachelor degree. Graduates will be able to: <ul style="list-style-type: none"> ➤ understand what's needed to apply, explain, control and practice complex human performance behaviours; ➤ develop research skills; ➤ prepare for higher degree studies at the masters and doctoral level. 	1 year FT or equivalent PT	Brisbane Melbourne Strathfield	CSP	Y	Applicants must have completed a relevant bachelor pass degree and attained grades of distinction or above in at least half of the graded units at second and third year levels, or completed at least one year's experience in a related area of exercise science.
		Attendance	Sem 1 (Feb) and Sem 2 (Jul)		



THE KNOWLEDGE AND EXPERIENCE I GAINED IN COMPLETING MY PLACEMENT AT A COMMUNITY LIVING ASSOCIATION - WHERE I WORKED WITH YOUNG CLIENTS WHO HAVE INTELLECTUAL AND/OR COGNITIVE DISABILITY AND MENTAL ILLNESS - HAS BEEN INVALUABLE.

MATT BRUNETTI
MASTER OF SOCIAL WORK

HEALTH ADMINISTRATION

COURSE	DURATION	CAMPUS/ MODE	TOTAL FEES/ INTAKE	CSP	FURTHER INFORMATION & REQUIREMENTS
GRADUATE CERTIFICATE IN HEALTH ADMINISTRATION This course equips students with skills to examine organisational culture, management concepts, governance and quality improvement within the healthcare workplace. Students will explore concepts relating to change management and outcomes, leadership strategies and skills, along with ethical, moral and social justice dimensions within the healthcare sector.	1 year PT 4 units	Brisbane* Nationally online *(INT students only)	\$7,800 (\$1,950 per unit x 4)* *(DOM applicants)	N	Applicants must have completed a bachelor degree in a health discipline or equivalent.
		Attendance* Online *(INT students only)	Sem 1 (Feb) and Sem 2 (Jul)		
GRADUATE DIPLOMA IN HEALTH ADMINISTRATION This course offers students the opportunity to build on their administrative or management foundations by evaluating current approaches to policy development and implementation in healthcare delivery.	1 year FT or equivalent PT 8 units	Brisbane* Nationally online *(INT students only)	\$15,600 (\$1,950 per unit x 8)* *(DOM applicants)	N	Applicants must have completed a bachelor degree in a health discipline or equivalent.
		Attendance* Online *(INT students only)	Sem 1 (Feb) and Sem 2 (Jul)		
MASTER OF HEALTH ADMINISTRATION Graduates will be able to: <ul style="list-style-type: none"> ➤ evaluate issues and challenges that confront the industry, healthcare professionals and consumers of their services; ➤ conceptualise new and creative approaches to healthcare administration to support service delivery in diverse healthcare settings; ➤ connect theory, practice and research within health administration; ➤ examine the ethical aspects of personal, social, cultural, environmental and institutional changes within contemporary healthcare delivery and respond to such changes; ➤ reflect on options and opportunities to enhance professional practice in contemporary local, regional and global healthcare contexts. 	1.5 year FT or equivalent PT 12 units	Brisbane* Nationally online *(INT students only)	\$23,400 (\$1,950 per unit x 12)	Y	Applicants must have completed a bachelor degree in a health discipline or equivalent.
		Attendance* Online *(INT students only)	Sem 1 (Feb) and Sem 2 (Jul)		

* Offered by the Faculty of Law and Business

HEALTHCARE SIMULATION EDUCATION

COURSE	DURATION	CAMPUS/ MODE	TOTAL FEES/ INTAKE	CSP	FURTHER INFORMATION & REQUIREMENTS
GRADUATE CERTIFICATE IN HEALTHCARE SIMULATION EDUCATION* The Graduate Certificate in Healthcare Simulation Education prepares students to design, develop, implement and evaluate effective simulation-based learning in healthcare education. This program combines educational theory with evidence-based practice to meet the needs of the learner, education providers, the healthcare industry and other organisations that embrace the use of simulation education.	1 year PT 4 units	Brisbane Melbourne North Sydney	\$7,800 (\$1,950 per unit x 4)	N	To be eligible for admission to the Graduate Certificate in Healthcare Simulation Education, an applicant must have: <ul style="list-style-type: none"> ➤ completed a bachelor degree or equivalent; ➤ work experience in health education; ➤ access to a simulation learning environment; or alternatively ➤ seek special entry approval from the National Head of School. The course is not open to international students on an international student visa.
		Multi-mode	Sem 1 (Feb)		

* Offered subject to final approval

HIGH PERFORMANCE SPORT

COURSE	DURATION	CAMPUS/ MODE	TOTAL FEES/ INTAKE	CSP	FURTHER INFORMATION & REQUIREMENTS
GRADUATE CERTIFICATE IN HIGH PERFORMANCE SPORT This course aims to help students develop the knowledge, understanding and skills needed to enhance the conditioning of high performance athletes, with the aim of optimising individual and team performance, within the context of a multidisciplinary environment and its culture and leadership structures, and to do so in an ethical manner characterised by a concern for respect, equity and social justice.	6 months FT or equivalent PT 4 units	Nationally online (with an attendance component in Melbourne)	\$7,800 (\$1,950 per unit x 4)	N	Applicants must have completed: <ul style="list-style-type: none"> ➤ a bachelor degree (or higher), normally in exercise science, sports science, human movement or a related discipline; or ➤ a bachelor degree (or higher), in a related allied health discipline AND have evidence of substantial relevant industry experience.
		Multi-mode	Sem 1 (Feb)		
GRADUATE DIPLOMA IN HIGH PERFORMANCE SPORT This course aims to help students develop the knowledge, understanding and skills needed to enhance the conditioning of high performance athletes, with the aim of optimising individual and team performance, within the context of a multidisciplinary environment and its culture and leadership structures, and to do so in an ethical manner characterised by a concern for respect, equity and social justice.	1 year FT or equivalent PT 8 units	Nationally online (with an intensive component in Melb)	\$15,600 (\$1,950 per unit x 8)	N	Applicants must have: <ul style="list-style-type: none"> ➤ completed a bachelor degree (or higher), normally in exercise science, sports science, human movement or a related discipline AND have evidence of substantial relevant industry experience; or ➤ completed a bachelor degree normally in exercise science, sports science, human movement or a related discipline, with a grade point average of at least 4.8; or ➤ completed the Graduate Certificate in High Performance Sport. <p>NOTE: Applicants having completed a bachelor degree (or higher) in a related allied health discipline may be considered, dependent on specific qualifications and evidence of substantial relevant industry experience or similar.</p> <p>NOTE: Applicants having completed a degree at AQF level 8 or above that incorporated research training may be eligible for recognition of prior learning. of up to 20 credit points.</p>
		Multi-mode	Sem 1 (Feb)		

HIGH PERFORMANCE SPORT

COURSE	DURATION	CAMPUS/ MODE	TOTAL FEES/ INTAKE	CSP	FURTHER INFORMATION & REQUIREMENTS
MASTER OF HIGH PERFORMANCE SPORT This program is designed to suit a postgraduate clientele that is already in the workforce, as well as graduating students. The course provides flexible learning pathways. It focuses on the preparation and performance of high performance athletes, including technological advances for athlete monitoring, strength and conditioning, fatigue, recovery and adaptation, and injury prevention and management.	1.5 years FT or equivalent PT 12 units	Nationally online (with an attendance component in Melb)	\$23,400 (\$1,950 per unit x 12)	N	Applicants must have: <ul style="list-style-type: none"> ➤ completed a bachelor degree (or higher), normally in exercise science, sports science, human movement or a related discipline AND have evidence of substantial relevant industry experience; or ➤ completed a bachelor degree normally in exercise science, sports science, human movement or a related discipline, with a grade point average of at least 4.8; or ➤ completed the Graduate Certificate or Graduate Diploma in High Performance Sport. NOTE: Applicants having completed a bachelor degree (or higher) in a related allied health discipline may be considered, dependent on specific qualifications and evidence of substantial relevant industry experience or similar. NOTE: Applicants having completed a degree at AQF level 8 or above that incorporated research training may be eligible for recognition of prior learning of up to 40 credit points.
		Multi-mode	Sem 1 (Feb)		

MENTAL HEALTH

COURSE	DURATION	CAMPUS/ MODE	TOTAL FEES/ INTAKE	CSP	FURTHER INFORMATION & REQUIREMENTS
GRADUATE CERTIFICATE IN MENTAL HEALTH GRADUATE CERTIFICATE IN MENTAL HEALTH (NURSING) This course builds upon existing foundation knowledge of mental health practice for nurses, occupational therapists, psychologists, social workers, and counsellors who seek to extend their knowledge and skills in the field of mental health. Incorporated within this certificate are units that are embedded in a recovery-focused and an individual-centred framework. Concepts examined include diversity, inequality, social inclusion, partnerships, resilience and reflective practice within a holistic individual centred mental health framework.	1 year PT 4 units	Brisbane Melbourne North Sydney Multi-mode	\$7,800 (\$1,950 per unit x 4) Sem 1 (Feb) and Sem 2 (Jul)	N	Applicants must have completed a bachelor degree in a health discipline (for example occupational therapy, social work, physiotherapy, speech pathology) or a Bachelor of Nursing for the nursing specialisation.
GRADUATE DIPLOMA IN MENTAL HEALTH GRADUATE DIPLOMA IN MENTAL HEALTH (NURSING)* This course builds upon the graduate certificate, continuing with the aim of developing clinicians' knowledge and skills in mental health practice with evidence-based knowledge and practice enabling immediate application/translation in the workplace. Core units include health promotion, interpreting health research, and governance and leadership in health care.	1 year FT or equivalent PT 8 units	Brisbane Melbourne North Sydney Multi-mode	\$15,600 (\$1,950 per unit x 8) Sem 1 (Feb)	N	Applicants must have completed: <ul style="list-style-type: none"> ➤ a bachelor degree or higher in nursing or a health discipline; or ➤ the Graduate Certificate in Mental Health/ (Nursing).
MASTER OF MENTAL HEALTH MASTER OF MENTAL HEALTH (NURSING)* This course builds upon the graduate certificate/ graduate diploma and aims to expand the health clinicians' knowledge and skills in mental health practice at a specialist and advanced level. The course includes carefully designed coursework units with embedded research-led teaching, with both coursework and thesis options.	1.5 years FT or equivalent PT 12 units	Brisbane Melbourne North Sydney Multi-mode	\$23,400 (\$1,950 per unit x 12) Sem 1 (Feb)	N	Applicants must have completed: <ul style="list-style-type: none"> ➤ a bachelor degree or higher in nursing or a health discipline; or ➤ the Graduate Diploma in Mental Health/ (Nursing).

* It is expected that registered nurses who successfully complete the Postgraduate Diploma of Mental Health (Nursing) or Master of Mental Health (Nursing) will meet the qualification criteria of the Credential for Practice Program.

MIDWIFERY

COURSE	DURATION	CAMPUS/ MODE	TOTAL FEES/ INTAKE	CSP	FURTHER INFORMATION & REQUIREMENTS
BACHELOR OF MIDWIFERY (HONOURS) This is a one-year degree for high-achieving students who have already completed the Bachelor of Midwifery or equivalent degree. The program enables students to build upon the knowledge gained in their pass degree, develop research skills that will equip them for future study at a higher degree level and work closely with an academic expert to contribute to a particular area of interest. The main focus of the program is to produce a research thesis under supervision from experienced academic staff. Each Honours student will work with an academic supervisor/s to complete the thesis component of the program. The thesis is to be between 15,000 and 18,000 words in length. Students generally meet with their supervisor at least fortnightly.	1 year FT or equivalent PT	Brisbane Melbourne Attendance	CSP Sem 1 (Feb) and Sem 2 (Jul)	Y	Applicants must have completed a Bachelor of Midwifery pass degree and attained grades of distinction or above in at least half of the graded units (a) at second and third year levels of the undergraduate course; or (b) in a postgraduate course.

NURSING

COURSE	DURATION	CAMPUS/ MODE	TOTAL FEES/ INTAKE	CSP	FURTHER INFORMATION & REQUIREMENTS
BACHELOR OF NURSING (HONOURS) This is a one-year degree for high-achieving students who have already completed the Bachelor of Nursing or equivalent degree. The program enables students to build upon the knowledge gained in their pass degree, develop research skills that will equip them for future study at a higher degree level and work closely with an academic expert to contribute to a particular area of interest. The main focus of the program is to produce a research thesis under supervision from experienced academic staff. This degree does not lead to accreditation as a nurse.	1 year FT or equivalent PT	Ballarat Brisbane Canberra Melbourne North Sydney	CSP	N	Applicants must have completed a Bachelor of Nursing pass degree and attained grades of distinction or above in at least half of the graded units (a) at second and third year levels of the undergraduate course; or (b) in a postgraduate course.
		Attendance	Sem 1 (Feb) and Sem 2 (Jul)		
GRADUATE CERTIFICATE IN CLINICAL NURSING This program is designed to expand students' knowledge and skills in clinical nursing whilst ensuring relevance to clinical practice. Students choose one clinical specialisation in which they will develop their skills in providing holistic care, including person and family-centred health promotion, in specialty practice. The Graduate Certificate in Clinical Nursing offers a number of specialties, ten of which are delivered entirely online: <ul style="list-style-type: none"> ➤ Aged Care Nursing ➤ Cardiac Care ➤ Child and Adolescent Health ➤ Emergency Nursing ➤ Medical Nursing ➤ Oncology Nursing ➤ Palliative Care ➤ Perioperative Nursing ➤ Renal Nursing ➤ Surgical Nursing 	1 year FT or equivalent PT 4 units	Nationally online	\$7,800 (\$1,950 per unit x 4)	N	Applicants must have completed a Bachelor of Nursing degree or equivalent and hold current registration with the Australian Health Practitioners Registration Authority (AHPRA). Applicants must be employed in their specialty; depending on whether this is an ACU partner institution or not, will depend upon which specialisations students may undertake.
		Nationally online	Sem 1 (Feb) and Sem 2 (Jul)		
GRADUATE DIPLOMA IN CLINICAL NURSING Students undertaking this program will examine the ethical aspects of contemporary healthcare delivery in respect to clinical nursing. Students will also develop and expand further knowledge, skills and understanding of decision making within the healthcare workplace.	1 year FT or equivalent PT 8 units	Nationally online	\$15,600 (\$1,950 per unit x 8)	N	Applicants must have completed a Bachelor of Nursing degree or equivalent and hold current registration with the Australian Health Practitioners Registration Authority (AHPRA). Applicants must be employed in their specialty; depending on whether this is an ACU partner institution or not, will depend upon which specialisations students may undertake.
		Nationally online	Sem 1 (Feb) and Sem 2 (Jul)		

NURSING

COURSE	DURATION	CAMPUS/ MODE	TOTAL FEES/ INTAKE	CSP	FURTHER INFORMATION & REQUIREMENTS
MASTER OF CLINICAL NURSING Graduates will be able to: <ul style="list-style-type: none"> ➤ evaluate issues and challenges confronting clinical practice within the healthcare sector; ➤ conceptualise new and creative approaches to clinical nursing to support service delivery in culturally-diverse healthcare settings; ➤ connect theory, practice and research with regard to clinical nursing in the healthcare workplace; ➤ examine the ethical aspects of personal, professional, social, cultural, environmental and institutional changes within contemporary healthcare delivery and respond to such changes. 	1.5 years FT or equivalent PT 8 units	Nationally online	\$23,400 (\$1,950 per unit x 12)	N	Applicants must have completed a bachelor degree in nursing or equivalent; and hold current registration with the Australian Health Practitioners Registration Authority (AHPRA).
		Online	Sem 1 (Feb) and Sem 2 (Jul)		
MASTER OF NURSING (PRACTICE INQUIRY) This degree will enable Registered Nurses to conduct clinical audits and quality improvement projects in any healthcare setting to improve nursing practice and patient outcomes. The course will be of relevance to those nurses who have a particular interest in improving nursing practice through inquiry, but who do not wish to commit to a more comprehensive research program which places the major emphasis on the thesis component of the degree. Graduates will be able to: <ul style="list-style-type: none"> ➤ justify the importance of recognising the patient as the source of control and full partner in the provision of coordinated care based on respect for patients' preferences, values and needs; ➤ integrate models of quality, safety, leadership, decision making, and related policies in continuous practice improvement; ➤ reflect critically on nursing care provision and patient outcomes that require improvement and change; ➤ demonstrate critical understanding and knowledge of health research and practice improvement principles and methods; ➤ locate and evaluate current evidence in relation to nursing practice issues/concerns through use of information and communication technologies; ➤ design, justify and implement a nursing inquiry project for practice improvement that involves inter and intraprofessional collaboration; ➤ evaluate a nursing inquiry project and integrate required changes into practice. 	1.5 years FT or equivalent PT 12 units	Ballarat Brisbane* Canberra Melbourne North Sydney *INT Students	\$23,400 (\$1,950 per unit x 12) *DOM applicants	N	Applicants must have completed a bachelor degree in nursing or equivalent; and be eligible for nurse registration in Australia.
		Brisbane attendance Online	Sem 1 (Feb)		

PARAMEDICINE

COURSE	DURATION	CAMPUS/ MODE	TOTAL FEES/ INTAKE	CSP	FURTHER INFORMATION & REQUIREMENTS
BACHELOR OF PARAMEDICINE (HONOURS) This is a one-year degree for high-achieving students who have already completed the Bachelor of Paramedicine or equivalent. The program enables students to build upon the knowledge gained in their pass degree, develop research skills that will equip them for future study at a higher degree level and work closely with an academic expert to contribute to a particular area of interest. The main focus of the program is to produce a research thesis under supervision from experienced academic staff. This degree does not lead to accreditation as a paramedic.	1 year FT or equivalent PT	Ballarat Brisbane Melbourne Canberra	CSP	Y	Applicants must have completed a Bachelor of Paramedicine degree and attained grades of distinction or above in at least half of the graded units at second and third year levels; or in a postgraduate course. Admission will also be subject to availability of supervisors.
		Attendance	Sem 1 (Feb) and Sem 2 (Jul)		
GRADUATE CERTIFICATE IN PARAMEDICINE Graduates will gain advanced theoretical and technical knowledge in the areas of paramedic care, community health, leadership, health administration, evolution of paramedic practice and clinical education.	1 year PT 4 units	Nationally online	\$9,540 (\$2,385 per unit x 4)	N	Applicants must: <ul style="list-style-type: none"> ➤ have completed a bachelor degree in paramedicine (or equivalent); and ➤ be eligible for employment as a paramedic to the equivalent of the standard of practice in Australia.
		Online	Sem 1 (Feb) and Sem 2 (Jul)		
GRADUATE DIPLOMA IN PARAMEDICINE Graduates will gain advanced theoretical and technical knowledge in the areas of paramedic care, community health, leadership, health administration, evolution of paramedic practice and clinical education. They will also gain advanced theoretical and technical knowledge in the areas of ethics and research methods.	1 year FT or equivalent PT 8 units	Nationally online	\$19,080 (\$2,385 per unit x 8)	N	Applicants must: <ul style="list-style-type: none"> ➤ have completed a bachelor degree in paramedicine (or equivalent); or ➤ have completed a Graduate Certificate in Paramedicine; and ➤ be eligible for employment as a paramedic to the equivalent of the standard of practice in Australia.
		Online	Sem 1 (Feb) and Sem 2 (Jul)		
MASTER OF PARAMEDICINE Graduates will gain advanced and extended theoretical and technical knowledge in the areas of applied research, evolution of paramedic practice and clinical education, and will plan and execute a substantial research based project, capstone experience and/or piece of scholarship. Students have the ability to tailor the degree to their specific interests and career needs by choosing from a range of elective interdisciplinary units to compliment the core selection of paramedicine units.	1.5 years FT or equivalent PT 12 units	Nationally online	\$28,620 (\$2,385 per unit x 12)	N	Applicants must: <ul style="list-style-type: none"> ➤ have completed a bachelor degree in paramedicine (or equivalent); or ➤ have completed a Graduate Certificate in Paramedicine; or ➤ have completed a Graduate Diploma in Paramedicine; and ➤ be eligible for employment as a paramedic to the equivalent of the standard of practice in Australia.
		Online	Sem 1 (Feb) and Sem 2 (Jul)		

PSYCHOLOGY

COURSE	DURATION	CAMPUS/ MODE	TOTAL FEES/ INTAKE	CSP	FURTHER INFORMATION & REQUIREMENTS
BACHELOR OF PSYCHOLOGICAL SCIENCE (HONOURS) The course will equip graduates for further study at a higher degree level. Completion of the honours program plus enrolment in a postgraduate psychology program meets the requirements for provisional registration as a psychologist with the Psychology Board of Australia. Students will learn more about neuropsychology and personality assessment tools as well as evidence-based approaches to psychological interventions; delve into professional issues and ethics as well as practical issues such as interviewing, report writing, supervision and case preparation; and gain experience in researching human behaviour. This includes all steps of the research process from formulating research questions and hypotheses to data collection, analysis and detailed reporting of research findings.	1 year FT or equivalent PT	Brisbane Melbourne Strathfield	CSP	Y	Applicants must have completed a bachelor degree including: <ul style="list-style-type: none"> ➤ an accredited three-year sequence in psychology; ➤ at least a credit average across all units of the pass degree; ➤ distinction level or above in at least four second and third year psychology units; and ➤ at least a pass in the prerequisites for units to be undertaken in the honours degree.
POSTGRADUATE DIPLOMA IN PSYCHOLOGY* This program is for students who have previously completed an accredited three-year sequence in psychology. It offers advanced level coursework study in a selection of specialised areas in psychology, providing graduates with an approved Australian Psychology Accreditation Council (APAC) fourth year of training in psychology. Students will undertake a supervised research project. The program includes the study of research methods, professional issues and ethics and assessment and intervention. * This program is currently not AQF compliant. It is currently undergoing review and is expected to be AQF compliant for 2015. The course will be renamed the GRADUATE DIPLOMA IN PSYCHOLOGY once full approval has been granted.	1 year FT or equivalent PT 8 units	Brisbane Melbourne Strathfield	\$16,400 (\$2,050 per unit x 8)	N	Applicants must have completed a bachelor degree including: <ul style="list-style-type: none"> ➤ an accredited three-year sequence in psychology; ➤ at least a credit average across all units of the pass degree; ➤ credit level (or above) in four second and third-year psychology units; ➤ at least a pass in the prerequisites for units to be undertaken in the postgraduate diploma.
POSTGRADUATE DIPLOMA IN PROFESSIONAL PSYCHOLOGY (PDPP)* The program is offered under the 5+1 model of psychology training. Open to graduates of an accredited fourth-year psychology program, this course is designed to provide graduates in psychology with an additional year of full-time education in the professional practice of psychology. This year is sufficient to prepare graduates for a final year of supervised practice prior to general registration as a psychologist. The program offers an alternative to registering as a provisional psychologist through a supervised practice (4+2) pathway or a specialised Master of Psychology degree. This program holds conditional accreditation with the Australian Psychological Accreditation Council (APAC) as a recognised fifth-year in psychology. Students will complete a minimum of 300 hours of practical experience through two clinical practicums in addition to meeting with a registered psychologist for supervision. * This program is currently not AQF compliant. It is currently undergoing review and is expected to be AQF compliant for 2015. The course will be renamed the MASTER OF PROFESSIONAL PSYCHOLOGY once full approval has been granted.	1 year FT or up to 3 years PT 8 units	Brisbane Melbourne	\$16,400 (\$2,050 per unit x 8)	N	Applicants must have completed: <ul style="list-style-type: none"> ➤ a bachelor degree with honours in an accredited psychology course with a minimum of honours IIB; or ➤ a bachelor degree with accredited fourth-year equivalent major study in psychology (with performance deemed of the same level as honours IIB); and demonstrated suitability to undertake the course as evidenced by satisfactory: <ul style="list-style-type: none"> ➤ academic referee report; ➤ professional referee report; and ➤ interview with the selection committee (for short-listed candidates).

PSYCHOLOGY

COURSE	DURATION	CAMPUS/ MODE	TOTAL FEES/ INTAKE	CSP	FURTHER INFORMATION & REQUIREMENTS
<p>MASTER OF PSYCHOLOGY (CLINICAL)</p> <p>This degree is open to graduates of an accredited fourth-year psychology program who are eligible for registration with the Psychology Board of Australia as a conditional/provisional psychologist. It provides an approved Australian Psychology Accreditation Council (APAC) fifth and sixth year training in psychology.</p> <p>The program provides graduates with ethical values, advanced knowledge and professional skills in psychology, integrated by the scientist-practitioner model.</p> <p>Graduates will be prepared for responsible work as practitioner psychologists and skilled researchers in a range of institutions and agencies providing psychological and mental health services.</p> <p>Students will undertake core and specialisation units, practicum units and thesis units in the discipline of clinical psychology.</p>	2 years FT or equivalent PT 12 units	<p>Brisbane Melbourne Strathfield*</p> <p>*Subject to approval</p>	<p>CSP and/or \$28,620 (\$2,385 per unit x 12)</p>	Y	<p>Applicants must have completed:</p> <ol style="list-style-type: none"> <ul style="list-style-type: none"> a bachelor degree with honours in accredited psychology course with minimum of IIB honours; or a bachelor degree with accredited four year major study in psychology; OR a bachelor degree with accredited three year major study in psychology and satisfactory completion of an additional year of accredited study in psychology, or equivalent; or <ul style="list-style-type: none"> qualifications and experience assessed as equivalent by the selection committee; <p>AND</p> <ol style="list-style-type: none"> demonstrated suitability to undertake the course as evidenced by satisfactory: <ul style="list-style-type: none"> academic referee report; professional referee report; and interview with the selection committee (for short-listed candidates).
<p>MASTER OF PSYCHOLOGY (EDUCATIONAL AND DEVELOPMENTAL)</p> <p>This degree is open to graduates of an accredited fourth-year psychology program who are eligible for registration with the Psychology Board of Australia as a conditional/provisional psychologist. It provides an approved Australian Psychology Accreditation Council (APAC) fifth and sixth year training in psychology.</p> <p>Students will acquire the knowledge and skills for professional practice and research in educational and developmental psychology. In addition to studying core subjects such as Psychological Assessment, and Counselling One-to-One, students will also gain practical experience in delivering a range of psychological services and gain specialist knowledge in subjects such as Learning Processes and Problems, and Typical and Atypical Development.</p>	2 years FT or equivalent PT 12 units	<p>Melbourne Brisbane*</p> <p>*Subject to approval</p>	<p>CSP and/or \$28,620 (\$2,385 per unit x 12)</p>	Y	<p>Applicants must have completed:</p> <ol style="list-style-type: none"> <ul style="list-style-type: none"> a bachelor degree with honours in accredited psychology course with minimum of IIB honours; or a bachelor degree with accredited four year major study in psychology; OR a bachelor degree with accredited three year major study in psychology and satisfactory completion of an additional year of accredited study in psychology, or equivalent; or <ul style="list-style-type: none"> qualifications and experience assessed as equivalent by the selection committee; <p>AND</p> <ol style="list-style-type: none"> demonstrated suitability to undertake the course as evidenced by satisfactory: <ul style="list-style-type: none"> academic referee report; professional referee report; and interview with the selection committee (for short-listed candidates).

PSYCHOLOGY

COURSE	DURATION	CAMPUS/ MODE	TOTAL FEES/ INTAKE	CSP	FURTHER INFORMATION & REQUIREMENTS
<p>MASTER OF PSYCHOLOGY (CLINICAL) / DOCTOR OF PHILOSOPHY</p> <p>This dual degree combines professional training within educational and developmental psychology with a research Doctor of Philosophy (PhD).</p> <p>During this combined degree, you will gain experience in the delivery of psychological services through practicums, study clinical bases such as Psychological Assessment, Psychological Disorders and Counselling One-to-One and complete a doctoral thesis.</p> <p>Other specialist units in the clinical psychology stream are Assessment and Interventions with Adults, Assessment and Interventions with Children, Youth and Families, and Health Psychology.</p>	4 years FT or equivalent PT 12 units	Brisbane Melbourne	\$28,620 (\$2,385 per unit x 12)	N	<p>There are two pathways into this course.</p> <ol style="list-style-type: none"> Applicants must first contact the School of Psychology to explore potential research areas, identify a potential PhD supervisor and write a brief research proposal. Following this, students may apply to Graduate Research for admission to the PhD, and apply simultaneously online for entry into the MPPsych program. <p>Entry requirements to be met by these applicants are:</p> <ul style="list-style-type: none"> ➤ four years of an accredited undergraduate psychology sequence, comprising a first class honours degree in psychology or equivalent; ➤ interview with the selection committee (for short-listed candidates); and ➤ provision of two referee reports: one professional/personal and one academic. <ol style="list-style-type: none"> Students already enrolled in the Master of Psychology (Clinical) who have completed successfully year one with a distinction average across all subjects in that program may contact the School of Psychology to explore potential research areas, identify a potential PhD supervisor and write a brief research proposal. Following this, students must apply to Graduate Research for admission to the PhD and undertake an interview with the selection committee (for shortlisted candidates) and provide two referee reports: one professional/ personal and one academic.
		Attendance	Sem 1 (Feb)		

PSYCHOLOGY

COURSE	DURATION	CAMPUS/ MODE	TOTAL FEES/ INTAKE	CSP	FURTHER INFORMATION & REQUIREMENTS
<p>MASTER OF PSYCHOLOGY (EDUCATIONAL AND DEVELOPMENTAL) / DOCTOR OF PHILOSOPHY</p> <p>This dual degree combines professional training within clinical psychology with a research Doctor of Philosophy (PhD).</p> <p>During this combined degree, students will gain experience in the delivery of psychological services through practicums, study subjects such as Psychological Assessment, Psychological Disorders and Counselling one-to-one and complete a doctoral thesis.</p> <p>Other specialist units in this stream are Learning Processes and Problems, Typical and Atypical Development, and Advanced Educational and Developmental Assessment.</p>	4 years FT or equivalent PT 12 units	Melbourne	CSP and/or \$28,620 (\$2,385 per unit x 12)	N	<p>There are two pathways into this course.</p> <ol style="list-style-type: none"> Applicants must first contact the School of Psychology to explore potential research areas, identify a potential PhD supervisor and write a brief research proposal. Following this, students may apply to Graduate Research for admission to the PhD, and apply simultaneously online for entry into the MPPsych program. <p>Entry requirements to be met by these applicants are:</p> <ul style="list-style-type: none"> four years of an accredited undergraduate psychology sequence, comprising a first class honours degree in psychology or equivalent; interview with the Selection Committee (for short-listed candidates); and provision of two referee reports: one professional/personal and one academic. <ol style="list-style-type: none"> Students already enrolled in the Master of Psychology (Educational and Developmental) who have completed successfully year one with a distinction average across all subjects in that program may contact the School of Psychology to explore potential research areas, identify a potential PhD supervisor and write a brief research proposal. Following this, students must apply to Graduate Research for admission to the PhD and undertake an interview with the selection committee (for short-listed candidates) and provide two referee reports: one professional/personal and one academic.
		Attendance	Sem 1 (Feb)		



I HAVE BEEN A STUDENT
AT ACU FOR FIVE YEARS
AND HAVE REALLY
ENJOYED BOTH THE
RESEARCH AND CLINICAL
ASPECTS TO MY DEGREE.

BREANNA HOLDEN

MASTER OF PSYCHOLOGY (CLINICAL)

REHABILITATION

COURSE	DURATION	CAMPUS/ MODE	TOTAL FEES/ INTAKE	CSP	FURTHER INFORMATION & REQUIREMENTS
<p>GRADUATE CERTIFICATE IN REHABILITATION (DISCIPLINE)</p> <p>The Graduate Certificate in Rehabilitation (Discipline) builds on discipline specific knowledge and skills for physiotherapists, occupational therapists, speech pathologists and other health professionals, who seek to extend their knowledge and skills in the fields of aged and neurological rehabilitation. Graduate certificate coursework focuses on evidence-based enquiry, and fosters application of advanced clinical reasoning for holistic management of aged and neurological disorders as well as those with chronic disease and disability. The coursework (part-time) is case based and includes a blend of online learning and workshop intensives (initially at the Brisbane Campus). This level of study will culminate with a practicum related to inter-professional practice, developing skills in advanced communication, supervision, mentoring and leadership. Successful participants will graduate with:</p> <ul style="list-style-type: none"> ➤ Graduate Certificate in Rehabilitation ➤ Graduate Certificate in Rehabilitation (Occupational Therapy) ➤ Graduate Certificate in Rehabilitation (Neurological Physiotherapy) ➤ Graduate Certificate in Rehabilitation (Gerontological Physiotherapy) ➤ Graduate Certificate in Rehabilitation (Speech Pathology) <p>These courses aim to provide professional growth for clinicians and to facilitate return to the workforce or further studies in the Graduate Diploma of Rehabilitation (Discipline).</p>	<p>1 year PT* 4 units</p> <p>*PT only in 2015</p>	<p>Nationally online (with residential schools in Brisbane)</p> <p>Multi-mode (intensives/ online)</p>	<p>\$9,540 (\$2,385 per unit x 4)</p> <p>Sem 1 (Feb)</p>	<p>N</p>	<p>Applicants must have:</p> <ul style="list-style-type: none"> ➤ a bachelor degree from an accredited three year program in a health discipline or equivalent from an accredited university to enter the GradCertRehab non-specialty pathway; or ➤ a bachelor degree from an accredited four-year program in, occupational therapy or speech pathology or equivalent from an accredited university to enter the GradCertRehab discipline pathway, with a minimum grade point average (GPA) from their primary degree of 4.0; and ➤ a minimum of two years clinical experience in the appropriate discipline. <p>Demonstrate suitability to undertake the course:</p> <ul style="list-style-type: none"> ➤ For the occupational therapy discipline, applicants must hold current registration with the discipline-specific national allied health registration board or required authority in Australia, or registration authority in country of current practice. ➤ For the physiotherapy discipline, applicants must hold current registration with the discipline specific national allied health registration board or required authority in Australia, or registration authority in country of current practice. ➤ For the speech pathology discipline, applicants must have obtained and maintain eligibility to practice and membership with Speech Pathology Australia, or registration authority in country of current practice. ➤ It is expected that students have access to a workplace to undertake clinical related activities either through current employment (full or part-time), or a plan to return to the workforce within Australia after a period of leave, or through a relationship with the University clinics.

REHABILITATION

COURSE	DURATION	CAMPUS/ MODE	TOTAL FEES/ INTAKE	CSP	FURTHER INFORMATION & REQUIREMENTS
<p>GRADUATE DIPLOMA IN REHABILITATION (DISCIPLINE)</p> <p>The Graduate Diploma in Rehabilitation (Discipline) includes a nested Graduate Certificate in Rehabilitation and will be available part-time from 2015 (full-time from 2016). This coursework further builds discipline-specific knowledge and skills for physiotherapists, occupational therapists, speech pathologists and other health professionals, who seek to extend their knowledge and skills in the fields of aged and neurological rehabilitation. Case-based, online collaborative learning and workshop intensives further extend knowledge and skills in these fields, build research skills for a clinical research project/activity and culminate in a discipline-specific practicum. Successful participants will graduate with:</p> <ul style="list-style-type: none"> ➤ Graduate Diploma in Rehabilitation ➤ Graduate Diploma in Rehabilitation (Occupational Therapy) ➤ Graduate Diploma in Rehabilitation (Physiotherapy) ➤ Graduate Certificate in Rehabilitation (Speech Pathology) <p>These courses aim to provide advanced knowledge and skills for continued professional growth and articulate to the Master of Rehabilitation (Discipline) or to a research higher degree.</p>	<p>1 year FT* or equivalent PT 8 units</p> <p>*PT only in 2015</p>	<p>Nationally online (with residential schools in Brisbane or North Sydney*) *subject to student location and location of staff with relevant expertise</p> <p>Multi-mode (intensives/ online)</p>	<p>\$19,080 (\$2,385 per unit x 8)</p> <p>Sem 1 (Feb)</p>	<p>N</p>	<p>Applicants must have:</p> <ul style="list-style-type: none"> ➤ a bachelor degree from an accredited three-year program or equivalent from an accredited university to enter the GradDipRehab non-specialty pathway; or ➤ a bachelor degree from an accredited four-year program in occupational therapy, physiotherapy or speech pathology or equivalent from an accredited university, to enter the GradDipRehab discipline pathway, with a minimum grade point average (GPA) from their primary degree of 4.0; and ➤ a minimum of two years clinical experience in the appropriate discipline. <p>Demonstrate suitability to undertake the course:</p> <ul style="list-style-type: none"> ➤ For the occupational therapy discipline, applicants must hold current registration with the discipline specific national allied health registration board or required authority in Australia, or registration authority in country of current practice. ➤ For the physiotherapy discipline, applicants must hold current registration with the discipline specific national allied health registration board or required authority in Australia, or registration authority in country of current practice. ➤ For the speech pathology discipline, applicants must have obtained and maintain eligibility to practice and membership with Speech Pathology Australia, or registration authority in country of current practice. ➤ It is expected that students have access to a workplace to undertake clinical related activities either through current employment (full or part-time), or a plan to return to the workforce within Australia after a period of leave, or through a relationship with the University clinics.

REHABILITATION

COURSE	DURATION	CAMPUS/ MODE	TOTAL FEES/ INTAKE	CSP	FURTHER INFORMATION & REQUIREMENTS
<p>MASTER OF REHABILITATION</p> <p>The Master of Rehabilitation (Discipline) -120 CP - is structured with a nested graduate certificate (40cp) and graduate diploma (80cp) for the disciplines of physiotherapy, occupational therapy and speech pathology and those who work in the fields of aged and neurological rehabilitation. The final four units will be delivered for the first time in 2017 (part-time/ full-time). The coursework builds from a focus on collaborative learning and inter-professional practice to more in-depth specialty knowledge and skills. The Master of Rehabilitation culminates with two discipline-specific practicums and the completion of a clinical research activity/project embedded within their clinical setting. Successful participants will graduate with:</p> <ul style="list-style-type: none"> ➤ Master of Rehabilitation (Occupational Therapy) ➤ Master of Rehabilitation (Neurological Physiotherapy) ➤ Master of Rehabilitation (Gerontological Physiotherapy) ➤ Master of Rehabilitation (Speech Pathology) <p>These courses aim to provide clinical expertise, and the research and professional experience for leadership in the workplace or for enrolment in a research higher degree.</p>	<p>1.5 years FT* or equivalent PT 12 units</p> <p>* PT only in 2015</p> <p>NB: Students holding an honours qualification may be eligible to complete in 1 year FT (or PT equivalent).</p>	<p>Nationally online (with residential schools in Brisbane, North Sydney or Melbourne*) *subject to student location and location of staff with relevant expertise</p> <p>Multi-mode (intensives/ online)</p>	<p>\$28,620 (\$2,385 per unit x 12)</p> <p>Sem 1 (Feb)</p>	<p>N</p>	<p>Applicants must have:</p> <ul style="list-style-type: none"> ➤ a bachelor degree from an accredited four-year program in occupational therapy or speech pathology or equivalent from an accredited university, with a minimum grade point average (GPA) from their primary degree of 4.0; and ➤ a minimum of two years clinical experience in the appropriate discipline. <p>Demonstrate suitability to undertake the course:</p> <ul style="list-style-type: none"> ➤ For the occupational therapy disciplines, applicants must hold current registration with the discipline specific national allied health registration board or required authority in Australia, or registration authority in country of current practice. ➤ For the physiotherapy discipline, applicants must hold current registration with the discipline specific national allied health registration board or required authority in Australia, or registration authority in country of current practice. ➤ For the speech pathology discipline, applicants must have obtained and maintain eligibility to practice and membership with Speech Pathology Australia, or registration authority in country of current practice. ➤ Be currently employed in a clinical role (full or part-time), or planning to return to the workforce within Australia after a period of leave.

SCIENCE

COURSE	DURATION	CAMPUS/ MODE	TOTAL FEES/ INTAKE	CSP	FURTHER INFORMATION & REQUIREMENTS
ENVIRONMENTAL SCIENCE (HONOURS) This is a degree for high-achieving students who have already completed the Bachelor of Environmental Science undergraduate degree or equivalent. Students will develop their areas of interest by: <ul style="list-style-type: none"> conducting research and coursework in a specialised field of environmental science; gaining industry perspective through field placement at an advanced level. 	1 year FT or equivalent PT	North Sydney	CSP	Y	Applicants must have completed the Bachelor of Environmental Science pass degree or equivalent, normally within the last five years with at least a credit average.
		Attendance	Sem 1 (Feb)		

SOCIAL WORK

COURSE	DURATION	CAMPUS/ MODE	TOTAL FEES/ INTAKE	CSP	FURTHER INFORMATION & REQUIREMENTS
MASTER OF SOCIAL WORK The Master of Social Work prepares students for practice as professional social workers. The course is accredited by the Australian Association of Social Workers (AASW). The Master of Social Work is a vibrant and challenging program that encourages students to build on their existing knowledge and experience. The course provides a sound understanding of social work values and practice approaches. Throughout the course there is an emphasis on social justice, human rights, and on achieving the best possible outcomes for the most marginalised and disadvantaged members of society. The AASW Practice Standards (2013) and Code of Ethics (2010) inform the course and define the knowledge and skills required for graduates to: <ul style="list-style-type: none"> understand the role of values in social work, incorporating social justice, respect for human rights, and non-sexist, nonracist and non-discriminatory practice; analyse critically and use theories, research findings and innovative developments in social work theory and the social and behavioural sciences; demonstrate a commitment to the empowerment of the people they work with reflect upon themselves as individuals within the context of wider social processes; apply analytical and interactional skills in professional practice with individuals, families, groups and communities; assist in efforts to secure social reform. You will be taught by leading academics and practitioners in the field and will be supported throughout the compulsory field work education practicums, providing valuable practical experience.	2 years FT or equivalent PT	Brisbane Strathfield Canberra	CSP	Y	Applicants must have completed an undergraduate degree from a recognised university which includes a minimum of 8 units (2 full-semester) of study in the social sciences. These units may include psychology, sociology, anthropology, policy studies, history, law, health and disability, technology, philosophy, indigenous studies, culture and human diversity, media study, gender studies, social theory and population studies.
		Attendance	Sem 1 (Feb)		



This is an AASW-accredited qualification. It is an entry qualification into the social work profession and has been determined to meet the Australian Social Work Education and Accreditation Standards (ASWEAS)

RESEARCH

COURSE	DURATION	CAMPUS/ MODE	TOTAL FEES/ INTAKE	CSP	FURTHER INFORMATION & REQUIREMENTS
MASTER OF HEALTH SCIENCE RESEARCH The Master of Health Science Research (Nursing); (Midwifery); (Paramedicine); (Exercise Science); (Physiotherapy); (Speech Pathology); (Occupational Therapy); (Public Health); (Social Work); provides students with the knowledge and skills to be able to plan and execute a substantial piece of ethical research with a high level of personal autonomy and accountability in a range of health contexts according to their discipline. Supervision provided will be subject to availability of supervisors and resources.	1.5 years FT or equivalent PT 12 units	Brisbane North Sydney Strathfield Canberra Melbourne Ballarat			Applicants must have: <ul style="list-style-type: none"> ➤ AQF Level 8: Bachelor degree or equivalent, with honours; or ➤ AQF Level 8: Bachelor degree and postgraduate certificate or diploma in an appropriate field of study; or ➤ AQF level 7: Bachelor degree in a health or health-related profession usually with a GPA of 5 or greater and 18 months in professional practice. International applicants need to meet the English Language Proficiency requirements as defined in the Admissions Rules. Enquiries: Email: adr-fhs@acu.edu.au
MASTER OF PSYCHOLOGY (CLINICAL) / DOCTOR OF PHILOSOPHY See coursework section above	12 units		\$28,620 (\$2,385 per unit x 12) Sem 1 (Feb) and Sem 2 (Jul)	N	
MASTER OF PHILOSOPHY (MPHIL) This research degree can be undertaken in any field covered by the University. It is assessed on the basis of a written thesis which is submitted at the conclusion of the degree.	Min 1 year (max 2 years) FT or equivalent PT 12 units	Ballarat Brisbane Canberra Melbourne North Sydney Strathfield			Candidates must comply with the Research and Professional Doctorate Degree Regulations. An applicant for admission to candidature for the degree of Master of Philosophy must have completed one of the following: <ul style="list-style-type: none"> ➤ an appropriate undergraduate honours degree or equivalent; or ➤ a masters degree with appropriate research training in a relevant field; or ➤ a masters preliminary program; or ➤ an equivalent qualification or experience.
DOCTOR OF PHILOSOPHY (PHD) Awarded for high-level research, it is expected that candidates will make a contribution to knowledge in their chosen field, which may be any covered by the University.	Min 3 years (max 4 years) FT or equivalent PT	Ballarat Brisbane Canberra Melbourne North Sydney Strathfield		N	Candidates must comply with the Research and Professional Doctorate Degree Regulations. An applicant for admission to candidature for the degree of Master of Philosophy must have completed one of the following: <ul style="list-style-type: none"> ➤ an appropriate undergraduate honours degree or equivalent; or ➤ a masters degree with appropriate research training in a relevant field; or ➤ a masters preliminary program; or ➤ an equivalent qualification or experience.

ACU

EXECUTIVE EDUCATION

Executive Education that's progressive,
practical and personalised.
Redefining business is what we do and also
what we hope to achieve.

The world has changed and traditional business-as-usual practices are now outdated, ineffective, and unsustainable.

ACU Executive Education is committed to developing a new calibre of executive leaders who can not only manage today's complexities, but also create tomorrow's possibilities.

If you need to address a particular skill shortage or build new capability within your organisation, our team is highly experienced in developing and managing executive education across a broad range of topics.

We also offer open programs which can articulate into ACU's impressive masters qualifications.



GRADUATE CERTIFICATES

Leading Resilient Enterprises

Negotiation

Psychology of Risk

Management of Not-for-Profit Organisations

Leadership & Catholic Culture



SHORT PROGRAMS

Executive Negotiation

Fundraising Masterclass



CONTACT US

Blog: www.redefining-business.com

Web: www.acu.edu.au/executiveeducation

Twitter: [twitter.com/@acuexecutive](https://twitter.com/acuexecutive)

Facebook: facebook.com/acuexeced

VISIT OUR WEBSITE

www.acu.edu.au/postgraduate