

# Pathways for University Success



## SCU College 2015



**It's all about U**  
[scu.edu.au/scucollege](http://scu.edu.au/scucollege)

CRICOS Provider: 01241G





# Welcome

Welcome to SCU College. We are proud of the role we play in opening access to university to students from diverse backgrounds, experiences and language groups.

Whether you are a school leaver, a mature aged person or VET graduate envisioning a career change we have a range of alternative pathways to help you achieve your goals at your own pace. Many of these pathways will provide credit towards higher qualifications at SCU.

We are proud of our success in providing life-changing opportunities and look forward to witnessing your success in study and beyond.

Professor Janet Taylor  
Director, SCU College



Jackson O'Keeffe thought he had blown any chance of ever studying a university degree after doing poorly in Year 12. But in 2012 he embarked on the University's Preparing for Success at SCU Program (PSP), graduated with a distinction and transferred to an Associate Degree in Law (Paralegal Studies). Again, he achieved strong grades and is now studying a Bachelor of Laws.

*"After I finished school, I started a chef apprenticeship, tried working for my Dad, and worked part-time as a cleaner. I didn't have much hope in relation to career plans. I realised that if I wanted a job that wasn't labour intensive I'd need a qualification, but I felt as though I had limited options due to my unsatisfactory HSC mark.*

*PSP gives you a second chance, it can open doors that you may never have thought were possible."*

**Jackson O'Keeffe**  
Preparing for Success at SCU Program

# SCU College

## Your pathway to success

SCU College offers numerous pathways to and through study at SCU: from short preparatory programs to one-year Diplomas, to two-year Associate degrees to a full degree. College programs have flexible distance education and part-time alternatives.

## What can I study?

**Bachelor of Contemporary Studies** – a three-year flexible degree which is a qualification in its own right or a pathway to other disciplines.

**Associate degrees (Arts, Allied Health, Business and Science)** – a two-year course which is a qualification in its own right or a direct path to a linked Bachelor degree accruing up to 16 units of advanced credit.

**Preparing for Success Program (PSP)** – a fee-free 12-week preparatory program for students aged over 18 years with minimal prior qualifications.

## Which pathway is best for you?

All study times are given in full-time study years – flexible distance and part-time study options are available in most pathways. Students can exit awards after one year or two years and be credited with Diploma or Associate degree qualifications (except in PSP). Entry criteria apply and final time taken will depend on units studied.

### Pathway 1: usually 3 years full-time<sup>1</sup>

Start here →	Bachelor of Contemporary Studies 3 years	
	College Connect support	
	3 years	

### Pathway 2: usually 3 – 4 years full-time<sup>1</sup>

Start here →	Associate degree 2 years	Linked Bachelor degrees 1 – 2 years
	College Connect support	
	3 – 4 years	

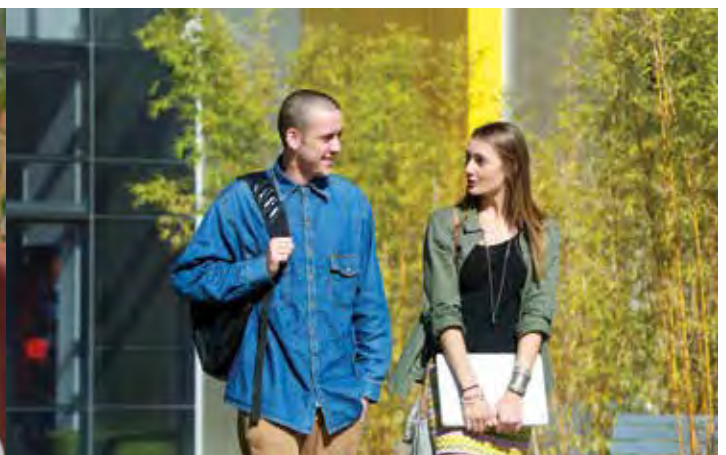
### Pathway 3: usually 3.5 – 4.5 full-time<sup>1</sup>

Start here →	PSP 12 weeks	Associate degree 2 years	Linked Bachelor degrees 1 – 2 years
		College Connect support	
	3.5 – 4.5 years		

### Pathway 4: usually 3.5 – 4.5 years full-time<sup>1</sup>

Start here →	PSP 12 weeks	Bachelor degrees
	3.5 – 4.5 years	

<sup>1</sup>Final time taken will depend on the length of the degree, units studied and starting time.





# SCU College

## What to expect when studying with SCU College and beyond

Studying at university can be both exciting and challenging. You will encounter new ways of teaching which are different from school, TAFE or work. You will meet new people whether studying on campus or online.

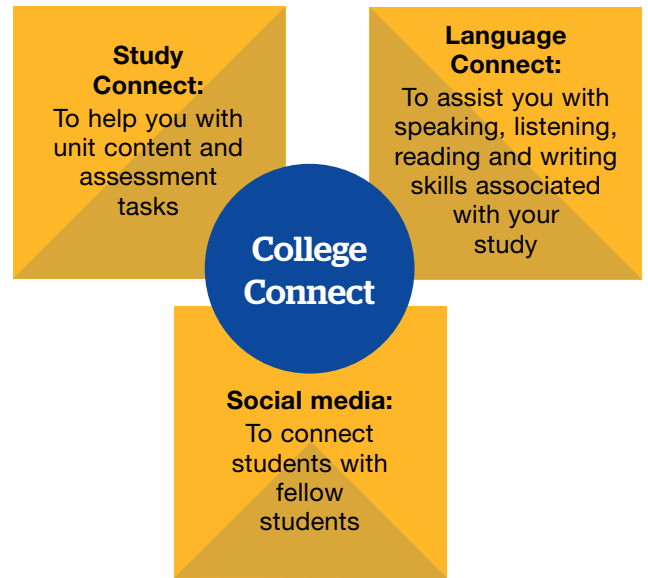
### Your workload

A full-time student will normally study four subjects (called units) each session. Part-time and distance education students may undertake only one or two units each session. Each one of those units will involve between 8-10 of hours study each week.

Managing your time is one of the secrets to success at university and the tutors in College programs will guide you through this. The key will be for you to engage in your study from day one and ask for help as soon as a question arises.

### College support and asking for help

The College is committed to supporting you above and beyond the assistance you receive in Bachelor level courses. For PSP this help is built in, and for the Diploma, Associate degree and Bachelor degree programs we have a special support strategy called College Connect. All support is offered on campus and online.



Connecting with this support is your first step towards future success in your studies.



Flexibility is the key for Honor O'Harae who is studying an Associate Degree of Business while juggling the demands of young children and a family business.

Honor plans to use the Associate Degree of Business as a pathway into Southern Cross University's Bachelor of Business and its industry accredited accounting majors.

*"I thought it would be really hard to get that same level of interaction online as you do in a classroom, but I haven't found that's the case at all.*

*I try to watch the lectures live online because I get a lot more out of live questioning, but on weeks that I can't make them, I watch the recordings instead. I can't imagine doing it more traditionally now. The flexibility is fantastic.*

*I didn't finish my HSC, so I was quite nervous starting a degree, but the first subject I did was incredibly helpful. We did a lot of stuff on how to check your progress, create timelines and understand when assessments are due."*

**Honor O'Harae**  
Associate Degree of Business

## Bachelor of Contemporary Studies

The Bachelor of Contemporary Studies is a three-year degree which is a qualification in its own right or can provide a pathway to other disciplines. After the first session students select a study stream, choosing from a general contemporary stream or alternatives from arts, science, allied health, engineering, business and tourism.

Students can progress through this award, exit early with a Diploma or Associate degree or seek to transfer to another SCU award upon achieving the required results.

### What will I learn?

In the first session of study students focus on core learning and language skills necessary for university. They then proceed to units from a chosen undergraduate degree. Students receive additional support throughout the Bachelor of Contemporary Studies.

### Who is it for?

This degree is suitable for VET graduates, mature aged students or school leavers who may have achieved lower than anticipated results in Years 11 and 12. English language proficiency is at Year 12 level or equivalent.

Entry criteria include one of the following:

- Completion of senior high school
- Certificate III qualification
- Completed Special Tertiary Admissions Test (STAT)
- Successful completion of PSP.

### Where can it lead?

Students have three alternative exit points for this degree:

- You can complete the Bachelor of Contemporary Studies and have a generalist university level qualification that will be applicable in a range of alternative, contemporary career paths.
- You can complete a designated discipline stream and be guaranteed entry into a linked professional Bachelor level qualification. For example if you complete the business or tourism stream you are guaranteed entry into the Bachelor of Business accruing up to 16 units of credit towards that degree.
- You may choose to exit early from the program with either a Diploma or an Associate degree.

### Summary

**Locations:** Lismore, Distance Education

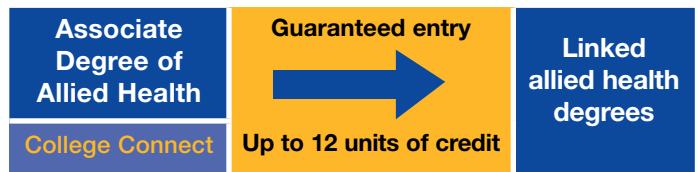
**Duration:** 3 years full-time or 6 years part-time

**UAC:** 330100 **QTAC:** 050011

**Total units:** 24

**Indicative ATAR and OP:** not available for new course





## Associate Degree of Allied Health

The Associate Degree of Allied Health is a two-year full-time (or part-time equivalent) course offered at the Gold Coast campus. It is a pathway into occupational therapy, podiatry, speech pathology or pedorthics. Students who have completed a Certificate IV in Allied Health Assistance will receive four units of credit towards their degree.

After completion of the two-year Associate degree students proceed into the second year of their degree.

### What will I learn?

In the first session of study students focus on core learning and language skills necessary for university level learning along with first year core units from their linked degree. They then proceed to units from a linked degree program. Students receive additional support while they are enrolled in the Associate degree through College Connect.

### Who is it for?

This associate degree is a pathway for students who want to work in an allied health profession and who do not meet the minimum requirements for entry to those degrees. Students interested in Nursing should use the Preparing for Success Program for entry. English language proficiency is at Year 12 level or equivalent.

Entry criteria include one of the following:

- Completion of senior high school
- Certificate III qualification
- Completed Special Tertiary Admissions Test (STAT)
- Successful completion of PSP.

### Where can it lead?

#### Guaranteed entry into linked Bachelor degrees

Graduates of the Associate Degree of Allied Health are guaranteed entry into linked degree programs as follows:

- Bachelor of Occupational Therapy
- Bachelor of Clinical Sciences
- Bachelor of Speech Pathology
- Bachelor of Podiatry.

Up to 12 units credit towards your undergraduate degree (depends on course and units studied).

#### Summary

**Location:** Gold Coast

**Duration:** 2 years full-time or 4 years part-time

**UAC:** GC – 335361 **QTAC:** GC – 055761

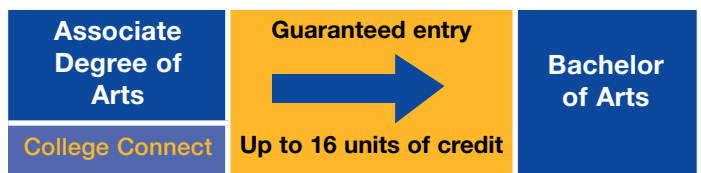
**Total units:** 16

#### Your career

Graduates may find work in para-professional roles in a wide range of settings, including in public and private hospitals; medical rehabilitation units; community health settings; community home care services; and residential aged care facilities (high and low care).

Allied health assistants work under the direct supervision of health care professionals to provide therapeutic and program-related support in a variety of assistant roles such as in occupational therapy, physiotherapy, pedorthics, podiatry, speech pathology and nutrition.





## Associate Degree of Arts

The Associate Degree of Arts is a two-year full time (or part-time equivalent) course offered on campus and by distance education. It is a pathway into humanities, arts and creative arts areas of study.

After completion of the second year, Associate degree students proceed into the second or third year of their degree program.

### What will I learn?

In the first session of study students focus on core learning and language skills necessary for university level learning along with first year core units from their linked degree. They then proceed to units from a linked degree program. Students receive additional support while they are enrolled in the Associate degree through College Connect.

### Who is it for?

This Associate degree is a pathway for students who are interested in arts and humanities and who do not meet the minimum requirements for entry to those degrees. English language proficiency is at Year 12 level or equivalent.

Entry criteria include one of the following:

- Completion of senior high school
- Certificate III qualification
- Completed Special Tertiary Admissions Test (STAT)
- Successful completion of PSP.

### Where can it lead?

#### Guaranteed entry into linked Bachelor degrees

Graduates of the Associate Degree of Arts are guaranteed entry into the following linked degree programs:

- Bachelor of Arts

*Other pathways to arts-related courses possible but may require a portfolio of work to enrol.*

Up to 16 units of credit towards your undergraduate degree (depends on course and units studied).

#### Summary

**Locations:** Gold Coast, Lismore, Distance Education

**Duration:** 2 years full-time or 4 years part-time

**UAC:** GC – 333361, L – 333311

**QTAC:** GC – 053061, L – 053111

**Total units:** 16

#### Your career

Graduates of the Associate Degree of Arts are suited to employment at the para-professional level in a range of areas relevant to the humanities and social sciences. These include community relations, cultural policy, management and administration, education, publishing, public service, multimedia design, creative and cultural industries, politics, social justice and human rights.

Graduates who proceed to the Bachelor of Arts can build critical thinking, creative practice, research and writing skills, with a strong emphasis on community engagement. They will have expanded career opportunities based on majors completed in the degree.





## Associate Degree of Business

The Associate Degree of Business is a two-year full time (or part-time equivalent) course offered on campus and by distance education. It is a pathway into all business and tourism studies including accounting, finance, human resource management, international business, information systems, marketing and tourism and hospitality.

After completion of the second year, Associate degree students proceed into the third year of their degree program.

### What will I learn?

In the first session of study students focus on core learning and language skills necessary for university level learning along with first year core units from their linked degree. They then proceed to units from a linked degree program. Students receive additional support while they are enrolled in the Associate Degree.

### Who is it for?

The Associate Degree of Business is a pathway for students who are interested in either business or tourism studies and who do not meet the minimum requirements for entry to those degrees. English language proficiency is at Year 12 level or equivalent.

Entry criteria include one of the following:

- Completion of senior high school
- Certificate III qualification
- Completed Special Tertiary Admissions Test (STAT)
- Successful completion of PSP

### Where can it lead?

#### Guaranteed entry into linked Bachelor degrees

Graduates of the Associate Degree of Business are guaranteed entry into linked degree programs as follows:

- Bachelor of Business
- Bachelor of Business Administration
- Bachelor of Business in Convention and Event Management
- Bachelor of Business in Tourism and Hospitality Management
- Bachelor of Information Technology.

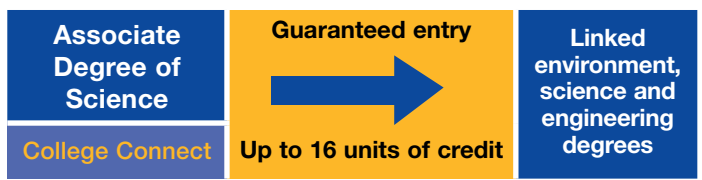
Up to 16 units of credit towards your undergraduate degree (depends on course and units studied).

Summary
<b>Locations:</b> Coffs Harbour, Gold Coast, Lismore, Distance Education
<b>Duration:</b> 2 years full-time or 4 years part-time
<b>UAC:</b> CH – 332351, GC – 332362, L – 332313
<b>QTAC:</b> CH – 052351, GC – 052362, L – 052313
<b>Total units:</b> 16

Your career
<p>Graduates of the Associate Degree of Business are suited to careers in the private and public business sectors across a range of industries and in fields such as general business, marketing, management, retail and other business services. Graduates who proceed to one of the pathway Bachelor degrees will gain further specialised knowledge and skills and be suited to a range of careers within the industry based on their study discipline and areas of focus.</p>







## Associate Degree of Science

The Associate Degree of Science is a two-year full time (or part-time equivalent) course offered on campus and by distance education. It is a pathway into all science, environmental science and engineering studies.

After completion of the second year, Associate degree students proceed into the second or third year of their degree program.

### What will I learn?

In the first session of study students focus on core learning and language skills necessary for university level learning along with first year core units from their linked degree. They then proceed to units from a linked degree program. Students receive additional support while they are enrolled in the Associate degree.

### Who is it for?

The Associate Degree of Science is a pathway for students who are interested in either science or engineering studies and who do not meet the minimum requirements for entry to those degrees. English language proficiency is at Year 12 level or equivalent.

Entry criteria include one of the following:

- Completion of senior high school
- Certificate III qualification
- Completed Special Tertiary Admissions Test (STAT)
- Successful completion of PSP.

### Where can it lead?

#### Guaranteed entry into linked Bachelor degrees

Graduates of the Associate Degree of Science are guaranteed entry into linked degree programs as follows:

- Bachelor of Science
- Bachelor of Environmental Science
- Bachelor of Engineering (Honours) in Civil Engineering
- Bachelor of Marine Science and Management
- Bachelor of Forest Science and Management.

Up to 16 units of credit towards your undergraduate degree (depends on course and units studied).

#### Summary

**Locations:** Lismore, Distance Education

**Duration:** 2 years full-time or 4 years part-time

**UAC:** L – 334312 **QTAC:** L – 054311

**Total units:** 16

#### Your career

Graduates of the Associate Degree of Science can seek para-professional participation in a range of industries, including positions as field assistants, laboratory assistants, revegetation officers and environmental monitors.

Graduates who proceed to one of the pathway Bachelor degrees will have a range of career opportunities available in their chosen fields in government agencies and in the private sector.





## Preparing for Success Program (PSP)

The Preparing for Success at SCU Program (PSP) is a 12-week program (or part-time equivalent) which assists students to develop the academic skills needed to succeed at university. The program is fee-free.

The PSP can be studied in a variety of flexible ways to assist those juggling other commitments. The course is available on all three campuses and by distance education. It enrolls new students three times a year.

Entry into the PSP is by direct application to the University with no admission fee.

### What will I learn?

The course comprises four units. Three compulsory units focus on individual and group management skills essential for successful university performance, effective research strategies and written communication, and practical numeracy skills. The fourth unit provides a choice of developing research and writing skills in the arts and business, or the sciences.

It is expected that students will have reasonable computer and information technology literacy, and ongoing access to an internet connection.

### Who is it for?

PSP is for an Australian citizen or resident who is over 18 years of age. It is open to those who may not meet the formal entry requirements for university study and want to study at university. English language proficiency is at Year 10 level or equivalent.

Entry criteria may include the following:

- Completion of secondary study to the equivalent of Year 10 in Australia or similar.
- Completion of a personal competency statement.

### Where can it lead?

#### Guaranteed entry into an SCU course

Students who successfully complete the PSP are guaranteed a place in an SCU course.

#### Summary

**Locations:** Coffs Harbour, Lismore, Gold Coast, Distance Education

**Duration:** One session full-time or up to 1 year part-time

**Total units:** 4

**Apply direct to the University**

#### Your career

This program provides an alternative entry path into Southern Cross University. The course is useful for school leavers or TAFE students who have taken the vocational strand of learning but would now like to go to university. The course is also valuable for those who have spent time away from the academic environment for family, career or personal reasons and who wish to revise their skills before undertaking a university degree.



## Applying to study on campus

For full details go to [scu.edu.au/howtoapply](http://scu.edu.au/howtoapply)

If you are planning to study on campus, either as a full-time or part-time student, you will need to apply online through either the Universities Admission Centre (UAC) or Queensland Tertiary Admissions Centre (QTAC) – either can process your application.

Contact details for **UAC:**  
W: [www.uac.edu.au](http://www.uac.edu.au)  
T: 02 9752 0200

Contact details for **QTAC:**  
W: [www.qtac.edu.au](http://www.qtac.edu.au)  
T: 07 3858 1222

**Tip:** Applications to begin Session 1 studies via UAC or QTAC generally need to be lodged by the last working day in September of the previous year, as applications after that date will incur a late fee.

## Applying to study by distance education

If you are planning to study by distance education, you can apply online direct to Southern Cross University at [scu.edu.au/howtoapply](http://scu.edu.au/howtoapply)

For further information visit:

W. [scu.edu.au/scucollege](http://scu.edu.au/scucollege)

E: [futurestudent@scu.edu.au](mailto:futurestudent@scu.edu.au)

Freecall: 1800 626 481

## International students

Southern Cross University welcomes international students. This guide however is not intended for their use. International students should contact SCU International.

W. [scu.edu.au/international](http://scu.edu.au/international)

E: [intoff@scu.edu.au](mailto:intoff@scu.edu.au)

Freecall: 02 6620 3876

## 2015 important dates\*

Rising Stars Scholarship applications for 2015	Open May 2014 Check website for closing dates <a href="http://scu.edu.au/scholarships">scu.edu.au/scholarships</a>
<b>Session 1 teaching dates</b>	16 February – 30 May 2015
Orientation	11 – 13 February 2015
UAC and QTAC on time applications for 2015 entry (Session 1)	Open early August 2014 Close late September 2014
<b>Session 2 teaching dates</b>	22 June – 3 October 2015
Orientation	17 – 19 June 2015
UAC and QTAC applications for 2015 entry (Session 2)	Open early August 2014 Close late May 2015
<b>Session 3 teaching dates</b>	19 October – 30 January 2016
Orientation	14 – 16 October 2015
UAC and QTAC applications for 2015 entry (Session 3)	Open early August 2015 Close mid-September 2015

\*QTAC, UAC, teaching, orientation and scholarship application dates are subject to change. Please refer to their websites. Late QTAC and UAC applications may cost more.

This brochure is a guide to Southern Cross University and the undergraduate studies offered by SCU College. The information set out in this brochure is an expression of intent only and should not be taken as a firm offer or undertaking.

The information contained in this brochure is correct at time of printing and the University reserves the right to make alterations to any information contained within this publication without notice. Copyright Southern Cross University July 2014.



T: 1800 626 481

E: [futurestudent@scu.edu.au](mailto:futurestudent@scu.edu.au)

W: [scu.edu.au/scucollege](http://scu.edu.au/scucollege)

