



# The University of New South Wales At a Glance

Never Stand Still



UNSW is one of Australia's leading universities and a member of both the Group of Eight and the prestigious Universitas 21 international network.

Located in Sydney, we are the only Australian research-intensive university established with a unique scientific, technological and professional focus, modelled on universities such as MIT in the US.

We attract talented students from across Australia and around the world. Our emphasis on quality continues to push up entry standards – in 2012, we saw record demand from the state's top school leavers.

Thanks to our high-achieving staff and students, innovative teaching, and a focus on real-world research with industry support, we are ranked in the world's top 50 universities.

**Professor Frederick Hilmer AO**  
President & Vice-Chancellor



**UNSW is a vibrant research university committed to making a difference through pioneering research and preparing the next generation of talented global citizens for career success.**



# A world-class university



## TOP RANKING

One of the world's top 50 universities in the 2011 QS rankings.

## RESEARCH EXCELLENCE

Top research university in NSW and fourth nationally in the *Excellence in Research for Australia* report.

## FIVE STARS

Maximum five-star rating for eight key performance indicators in the 2012 *Good Universities Guide*.

## AUSTRALIAN FIRST

First Australian university to be awarded five stars in the new QS Stars international benchmarking system.

## LEADING INNOVATOR

Australia's most innovative university at the 2012 Thomson Reuters Citation and Innovation Awards.

## TALENTED STUDENTS

Attracts the highest number of the state's top 500 high-school students.

## GRADUATE SUCCESS

Top starting salaries and employment rates for university graduates.

## BEST MBA

Ranked as the leading full-time MBA program in Australia and 35th in the world by the UK's *Financial Times*.

## INDUSTRY FAVOURITE

Highest funded university by industry partners through Linkage Project grants.

## GLOBAL PLAYER

More than 300 active partnerships with leading institutions around the world. International faculty and students come from more than 120 countries.

# UNSW has an international focus and believes that it is important to be open to the world through education and research.

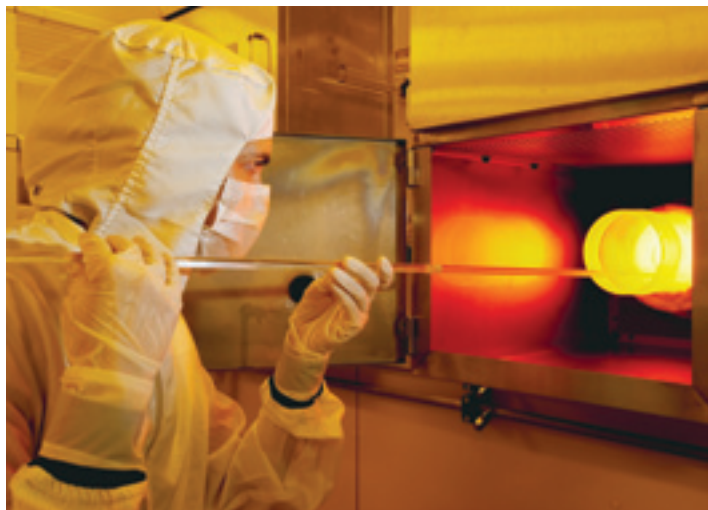
2012 *Good Universities Guide*

## **ASPIRATION**

To continually improve our position as a leading research-intensive university in the Asia–Pacific region, focusing on contemporary and social issues through defined strengths in professional, scientific and technological fields. We seek to make a significant contribution to the development of knowledge, to learning and teaching, to our students, and to society.

## **STRATEGIC OBJECTIVES**

- Continue to build on our position as a peer of the best globally in research performance, concentrating on defined strengths.
- Develop globally focused graduates who are rigorous scholars, capable of leadership and professional practice in an international community.
- Be a valued partner with key communities, making an impact on contemporary issues.
- Improve underlying leadership and operational capabilities.
- Maximise the availability of resources and the assignment of resources to priority areas.



# Fast facts

**50,516**

STUDENT  
ENROLMENTS

**12,690**

COMMENCING  
ENROLMENTS

**37,422**

DOMESTIC  
STUDENTS

**13,094**

INTERNATIONAL  
STUDENTS

**239,152**

ALUMNI

**5,300**

STAFF



# **FACULTIES**

ARTS AND SOCIAL  
SCIENCES

AUSTRALIAN SCHOOL  
OF BUSINESS

BUILT ENVIRONMENT

COLLEGE OF FINE ARTS

ENGINEERING

LAW

MEDICINE

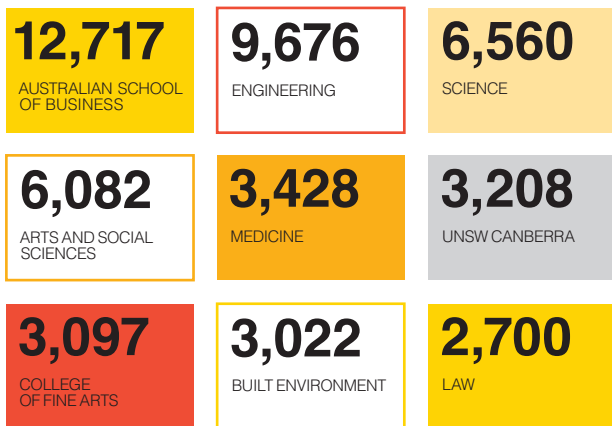
SCIENCE

## **UNSW CANBERRA**

Unique in Australia, UNSW Canberra at the Australian Defence Force Academy provides undergraduate education for officer cadets as well as postgraduate programs in arts, business, IT, engineering, management and science, which are open to all students.

# Students and staff

## STUDENTS BY FACULTY

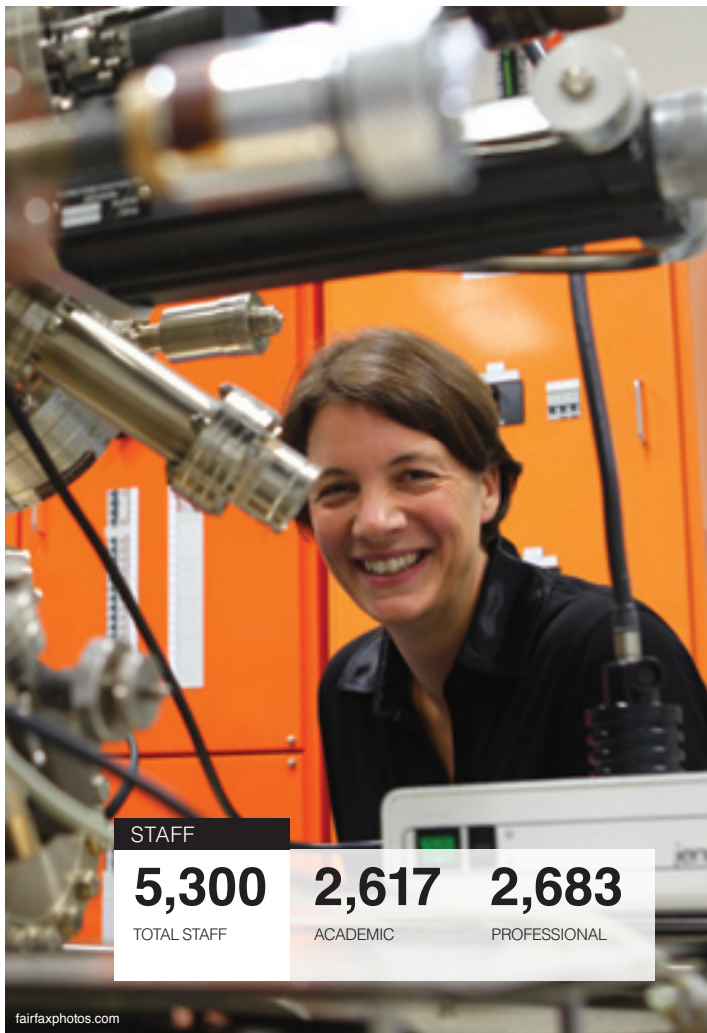


**\*26 OTHER**

## STUDENTS BY PROGRAM



<b>3,230</b>	Doctorate
<b>642</b>	Masters research
<b>11,667</b>	Masters coursework
<b>3,282</b>	Grad Dip & Grad Certificate
<b>31,695</b>	Bachelor & Diploma



STAFF

**5,300**

TOTAL STAFF

**2,617**

ACADEMIC

**2,683**

PROFESSIONAL

# Student experience

Innovative research and teaching together with strong international and industry links give our graduates a competitive edge – enjoying top starting salaries and employment rates.

We offer an extensive range of flexible undergraduate, postgraduate and research programs along with state-of-the-art learning facilities, providing our students with a world-class education.

To help our students reach their full potential we offer more than 1,500 scholarships annually and a full suite of support services.

Our green and contemporary campus provides more on-site accommodation than any other university in NSW as well as high-quality sporting and recreational facilities.

Source: *Australian Graduate Survey 2011*

## JOB-READY GRADUATES

### UNDERGRADUATE

#### MEDIAN STARTING SALARY

**\$55,000**

#### EMPLOYMENT

More than **8 of every 10 job seekers** (84%) are in full-time jobs within three months of completing their degree.


### POSTGRADUATE

#### MEDIAN STARTING SALARY

**\$100,000**

#### EMPLOYMENT

More than **9 of every 10 job seekers** (92%) are in full-time jobs within three months of completing their degree.

A full-page photograph of three young adults walking across a green lawn. On the left, a woman with long dark hair wears a yellow sleeveless top and blue jeans, holding a rolled-up document. In the center, a woman with shoulder-length brown hair wears a white t-shirt and dark jeans, carrying a black shoulder bag. On the right, a man with short brown hair wears a white t-shirt and blue jeans, holding a silver water bottle. They are all smiling and walking towards the camera. In the background, there is a modern building with large glass windows and lush green trees.

**WE PREPARE  
GRADUATES FOR  
GLOBAL CAREER  
SUCCESS**

# Global alumni

Our alumni community is now 239,000 strong, comprising graduates from 140 countries.

Here are our top 10:



**586**

CANADA

**1,813**

USA

**1,287**

UK

We host a range of events for alumni across Australia and through our international alumni chapters in locations such as China, Hong Kong, Singapore, Indonesia, USA and the UK.

## STAY CONNECTED

Go to UNSW Alumni at [www.alumni.unsw.edu.au](http://www.alumni.unsw.edu.au) to update your details and stay connected with us.

The top 10 countries of origin of our current international students are: China (with Hong Kong), Malaysia, Indonesia, Singapore, Korea, Vietnam, India, Thailand, Saudi Arabia and Iran.



# Global connections

Through our strong regional and global engagement, we have established links with more than 300 of the world's best institutions, including China's top universities – the C9 League.

These relationships enrich our teaching and research activities and provide an international platform for student mobility and academic engagement.

Our cosmopolitan campus is now home to students and staff from more than 120 countries.

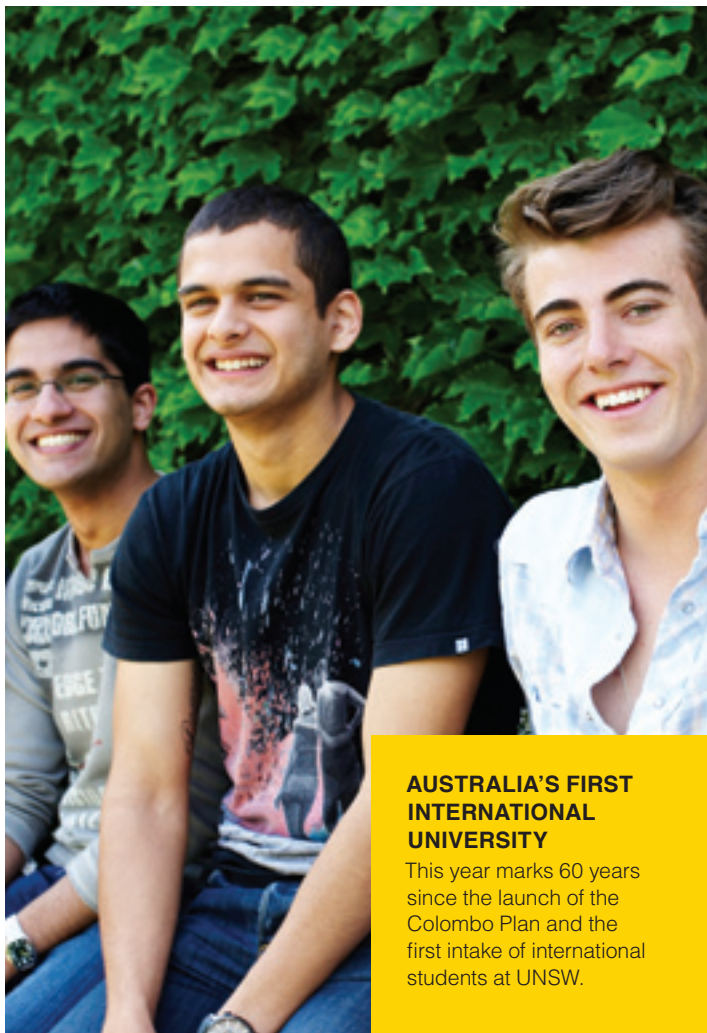


Gaining a global education has become more important than ever before for our students. Some of our most popular degree programs require one year of overseas study and a record number of students are heading off on exchanges in 35 countries.

Through our international curricula, flexible degree programs and overseas study opportunities, we prepare our graduates for global career success.

For our academics, UNSW's international alliances, including our membership of Universitas 21, provide opportunities for research collaborations and linkages, faculty exchanges and practicum programs for research students.





## **AUSTRALIA'S FIRST INTERNATIONAL UNIVERSITY**

This year marks 60 years since the launch of the Colombo Plan and the first intake of international students at UNSW.

# Research

**As a leading Australian research university we focus on areas critical to the future – from climate change and renewable energies to life-saving medical treatments and breakthrough technologies.**

To help ensure our research makes a practical impact, we work closely with industry.

The quality of our research was recognised in the inaugural *Excellence in Research for Australia* (ERA) report, which evaluated research in the nation's higher education institutions.

We are the top-ranking institution in NSW and one of only four nationally to receive an average ERA rating of “above world standard” in the 88 research fields assessed.

This success highlights the depth of our research talent – our academics feature prominently in prestigious national and international awards.



### **KEY AREAS OF RESEARCH STRENGTH**

- Biomedical Sciences
- Water, Environment and Sustainability
- Next Generation Materials and Technologies
- Social Policy, Government and Health Policy
- ICT, Robotics and Devices
- Business, Law and Economics

### **EMERGING & UNDERPINNING AREAS OF RESEARCH STRENGTH**

- Fundamental and Enabling Sciences
- Contemporary Humanities and Creative Arts
- Defence and Security

# Centres of excellence

## AUSTRALIAN RESEARCH COUNCIL CENTRES OF EXCELLENCE

UNSW is home to a number of ARC Centres of Excellence, including:

- Functional Nanomaterials
- Quantum Computation and Communication Technology
- Climate System Science
- Photovoltaics
- Population Ageing Research

## NATIONAL HEALTH AND MEDICAL RESEARCH COUNCIL CENTRES OF RESEARCH EXCELLENCE

UNSW has five NHMRC Centres of Excellence, the highest number in Australia. They focus on suicide prevention, mental health and substance use, traumatic brain injuries, immunising at-risk populations, and eHealth.

## NATIONAL RESEARCH CENTRES

UNSW hosts a number of national centres, including:

- Centre for International Finance and Regulation
- Australian Solar Institute
- Bionic Vision Australia
- The Kirby Institute
- National Drug and Alcohol Research Centre

## AFFILIATED INSTITUTIONS

A number of Australia's leading research institutions are affiliated with UNSW, including:

- Neuroscience Research Australia
- Victor Chang Cardiac Research Institute
- Garvan Institute of Medical Research
- Children's Cancer Institute Australia
- Black Dog Institute
- National Information and Communications Technology Australia

# Research performance

In 2012, UNSW's Block Grant Research funding grew by 11%, the largest increase of any Go8 university.

## RESEARCH INCOME

**\$297M**

2011

## WEIGHTED PUBLICATIONS

**4,756**

2011

## HIGHER DEGREE RESEARCH LOAD

**2,945**

2011

## RESEARCH BLOCK GRANT FUNDING

**\$153M**

2012

## HIGHER DEGREE RESEARCH COMPLETIONS

**654**

2011

# Industry partnerships

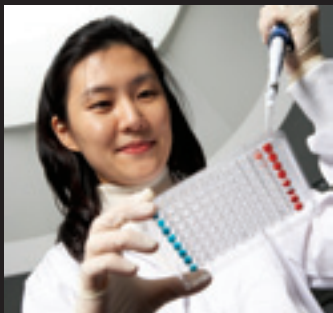
UNSW has a strong history of engaging with industry, reflected in our success in the Australian Research Council's Linkage Projects scheme.



In 2012, we won \$5.8 million for 20 Linkage Projects, topping the state and attracting the highest level of industry support nationally with \$15.1 million pledged from partner organisations.

## **TURNING RESEARCH INTO REAL-WORLD APPLICATIONS**

We were the first university in Australia, and one of the first in the world, to offer the majority of our intellectual property to companies for free. Our commercialisation company, NewSouth Innovations, manages the new system – Easy Access IP – which aims to turn more university research into real-world applications.

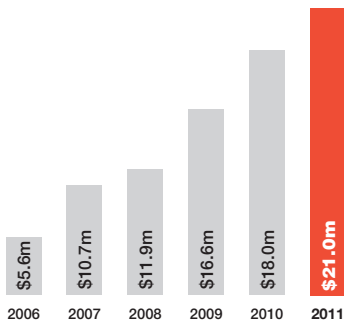


# Investing in our future

Thanks to our generous donors we can invest more in research, offer extra scholarships and ensure our facilities are world-class.

Our philanthropic investment continues to grow. In 2011, the UNSW Foundation secured more than \$21 million in fundraising income – the average annual growth rate over the past five years has been 30%. Our donor community is also growing, with more than 3,000 individuals, foundations, alumni and community members supporting us in 2011.

## GIVING TO UNSW – FUNDRAISING INCOME



"We know that it is through friends and benefactors that we have been able to get to where we are and we thank them for sharing this vision. Their generosity has enabled us to move ahead with our expansion plans. A gift today is an investment in tomorrow."

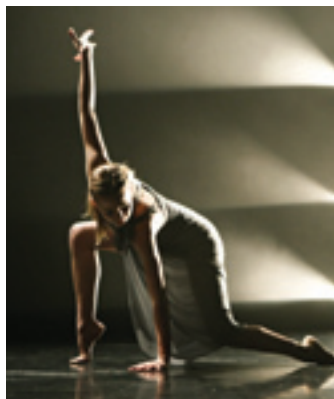
**Mr David Gonski AC**

Chancellor and Chair of the UNSW Foundation

# Community engagement

We have a proud tradition of contributing to our community. From public lectures and open days to concerts and exhibitions, we welcome thousands of people through our gates every year.

We also work in partnership with government, business, industry, schools and the wider community to add value beyond the classroom, sharing the benefits of our knowledge and research outcomes.



Significant university outreach activities include:

- Centre for Eye Health – provides state-of-the-art eye care and diagnostic services to the general community in one location, at no charge. Funded by Guide Dogs NSW/ACT, the centre has so far helped more than 10,000 people.
- Kingsford Legal Centre – a community legal centre offering free legal advice.
- ASPIRE – a program promoting the university to disadvantaged high-school students. Major funding is provided by the Commonwealth.
- Nura Gili – provides pathways to university for Indigenous students and ongoing study support. Key partners are UBS and the Balnaves Foundation.



**WE ARE COMMITTED  
TO BOOSTING OUR  
OVERALL INDIGENOUS  
STUDENT ENROLMENTS  
TO 500 BY 2015**



# World-class facilities

## MAJOR NEW INFRASTRUCTURE ON CAMPUS

### **Tyree Energy Technologies**

**Building:** Opened in 2012, the \$125 million state-of-the-art building is the new headquarters for all energy-related research at UNSW. It received a six-star energy efficiency rating from the Green Building Council of Australia for its sustainable design.

### **Lowy Cancer Research**

**Centre:** Officially opened in 2010, the Centre is one of the largest dedicated cancer research facilities in Australia and the first to unite adult and childhood cancer researchers in one building.



## MAJOR DEVELOPMENTS UNDER CONSTRUCTION

### **Gateway@COFA:**

The \$58 million redevelopment of the COFA site is expected to be completed early in 2013. The project includes a major new art gallery on Sydney's Oxford Street.

### **Wallace Wurth expansion and redevelopment:**

This \$146 million project, to be completed in stages over 2013–2014, will renew and expand the Wallace Wurth Building to accommodate UNSW Medicine and the Kirby Institute.





## **BUILDING A HOME ON CAMPUS**

When the new \$110 million two-year redevelopment of our residential Kensington Colleges opens in early 2014, with expanded capacity for 923 students, UNSW will have more than doubled its on-campus student accommodation in four years, providing homes for more than 5,000 residents.

This work follows the recent opening of the UNSW Village (1,000 beds) and the New College Village (319 beds), while another self-catered complex providing 398 beds, the University Terraces, is due to open in early 2013.

The range of services available on campus will also be expanded over the next few years, with new study spaces and shopping, banking, cultural and sporting facilities.

# UNSW AT A GLANCE 2012

The University of New South Wales  
Sydney NSW 2052 Australia  
Tel +61 2 9385 1000  
[www.unsw.edu.au](http://www.unsw.edu.au)



Member Universitas 21



Published by the UNSW Office of Media  
and Communications

Second edition: August 2012

© The University of New South Wales.

CRICOS Provider Code 00098G

ABN 57 195 873 179

The information in this publication was  
correct at the time of printing. Updates  
are available on the UNSW website.



**UNSW**  
AUSTRALIA

